

For Research Use Only

PLN Recombinant monoclonal antibody, PBS Only

Catalog Number:86080-1-PBS



Basic Information

Catalog Number: 86080-1-PBS	GenBank Accession Number: BC005269	Purification Method: Protein A purification
Size: 100ug , Concentration: 1 mg/ml by Nanodrop;	GeneID (NCBI): 5350	CloneNo.: 250753E7
Source: Rabbit	UNIPROT ID: P26678	
Isotype: IgG	Full Name: phospholamban	
Immunogen Catalog Number: AG8632	Calculated MW: 52 aa, 6 kDa	
	Observed MW: 10 kDa, 25 kDa	

Applications

Tested Applications:
WB, Indirect ELISA

Species Specificity:
human, mouse, rat

Background Information

Phospholamban (PLN) is a 52-amino-acid transmembrane protein found in the sarcoplasmic reticulum (SR) of cardiac muscle cells. It has been postulated to regulate the activity of the calcium pump of cardiac sarcoplasmic reticulum. Phospholamban has a homopentamer form(25-27 kDa).

Storage

Storage:
Store at -80°C.

Storage Buffer:
PBS only, pH7.3

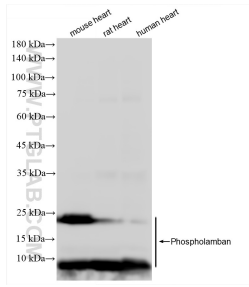
For technical support and original validation data for this product please contact:

T: 1 (888) 4PTGLAB (1-888-478-4522) (toll free
in USA), or 1(312) 455-8498 (outside USA)

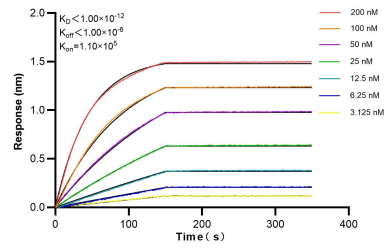
E: proteintech@ptglab.com
W: ptglab.com

This product is exclusively available under Proteintech Group brand and is not available to purchase from any other manufacturer.

Selected Validation Data



Various lysates were subjected to SDS PAGE followed by western blot with 86080-1-RR (PLN antibody) at dilution of 1:10000 incubated at room temperature for 1.5 hours. This data was developed using the same antibody clone with 86080-1-PBS in a different storage buffer formulation.



Biolayer interferometry (BLI) kinetic assays of 86080-1-RR against Human PLN were performed. The affinity constant is below 1 pM.