

For Research Use Only

PLN Recombinant monoclonal antibody

Catalog Number: 86080-1-RR



Basic Information

| | | |
|--|--|---|
| Catalog Number: 86080-1-RR | GenBank Accession Number: BC005269 | Purification Method: Protein A purification |
| Size: 100ul , Concentration: 1000 µg/ml by Nanodrop; | GeneID (NCBI): 5350 | CloneNo.: 250753E7 |
| Source: Rabbit | UNIPROT ID: P26678 | Recommended Dilutions: WB: 1:5000-1:50000 |
| Isotype: IgG | Full Name: phospholamban | |
| Immunogen Catalog Number: AG8632 | Calculated MW: 52 aa, 6 kDa | |
| | Observed MW: 10 kDa, 25 kDa | |

Applications

| | |
|--|--|
| Tested Applications: WB, ELISA | Positive Controls: WB : mouse heart tissue, rat heart tissue, human heart tissue |
| Species Specificity: human, mouse, rat | |

Background Information

Phospholamban (PLN) is a 52-amino-acid transmembrane protein found in the sarcoplasmic reticulum (SR) of cardiac muscle cells. It has been postulated to regulate the activity of the calcium pump of cardiac sarcoplasmic reticulum. Phospholamban has a homopentamer form(25-27 kDa).

Storage

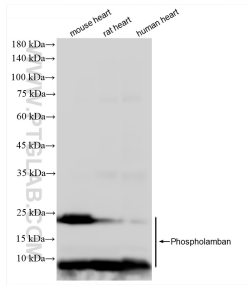
Storage:
Store at -20°C. Stable for one year after shipment.
Storage Buffer:
PBS with 0.02% sodium azide and 50% glycerol, pH7.3
Aliquoting is unnecessary for -20°C storage

*** 20ul sizes contain 0.1% BSA

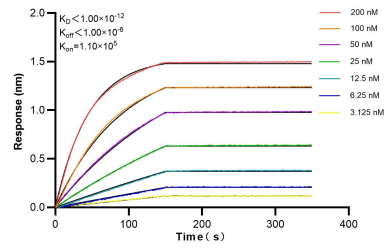
For technical support and original validation data for this product please contact:
T: 1 (888) 4PTGLAB (1-888-478-4522) (toll free in USA), or 1(312) 455-8498 (outside USA) E: proteintech@ptglab.com
W: ptglab.com

This product is exclusively available under Proteintech Group brand and is not available to purchase from any other manufacturer.

Selected Validation Data



Various lysates were subjected to SDS PAGE followed by western blot with 86080-1-RR (PLN antibody) at dilution of 1:10000 incubated at room temperature for 1.5 hours.



Biolayer interferometry (BLI) kinetic assays of 86080-1-RR against Human PLN were performed. The affinity constant is below 1 pM.