

For Research Use Only

# Mouse Lumican Recombinant antibody, PBS Only

Catalog Number: 86082-3-PBS



## Basic Information

<b>Catalog Number:</b> 86082-3-PBS	<b>GenBank Accession Number:</b> NM_008524.2	<b>Purification Method:</b> Protein A purification
<b>Size:</b> 100ug , Concentration: 1 mg/ml by Nanodrop;	<b>GeneID (NCBI):</b> 17022	<b>CloneNo.:</b> 250614E5
<b>Source:</b> Rabbit	<b>UNIPROT ID:</b> P51885	
<b>Isotype:</b> IgG	<b>Full Name:</b> lumican	
<b>Immunogen Catalog Number:</b> EG2481	<b>Calculated MW:</b> 38 kDa	
	<b>Observed MW:</b> 50-100 kDa	

## Applications

**Tested Applications:**  
WB, Indirect ELISA

**Species Specificity:**  
mouse

## Background Information

umican (LUM), a member of the small leucine-rich proteoglycan (SLRP) family, is one of the major extracellular components in interstitial collagenous matrices of the corneal stroma, aorta, skin, skeletal muscle, lung, kidney, bone, cartilage, and intervertebral discs. SLRPs constitute an important fraction of noncollagenous extracellular matrix proteins and have important effects on cell behavior. Lumican regulates collagenous matrix assembly as a keratan sulfate proteoglycan in the cornea and may exist as a glycoprotein in the connective tissues of other organs. Posttranslational modifications lumican goes through can increase its apparent molecular weight to 50-90 kDa. Studies show that lumican participates in the maintenance of tissue homeostasis and modulates cellular functions including cell proliferation, migration, and differentiation. (PMID: 18949819; 22252641; 9761754; 22365843)

## Storage

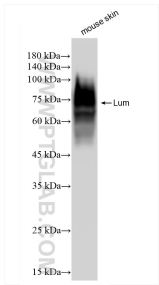
**Storage:**  
Store at -80°C.

**Storage Buffer:**  
PBS only, pH7.3

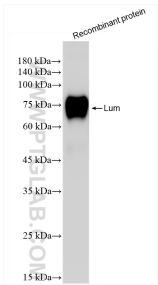
For technical support and original validation data for this product please contact:  
T: 1 (888) 4PTGLAB (1-888-478-4522) (toll free in USA), or 1(312) 455-8498 (outside USA)  
E: [proteintech@ptglab.com](mailto:proteintech@ptglab.com)  
W: [ptglab.com](http://ptglab.com)

This product is exclusively available under Proteintech Group brand and is not available to purchase from any other manufacturer.

# Selected Validation Data



Various lysates were subjected to SDS PAGE followed by western blot with 86082-3-RR (Lum antibody) at dilution of 1:5000 incubated at room temperature for 1.5 hours. This data was developed using the same antibody clone with 86082-3-PBS in a different storage buffer formulation.



Recombinant protein were subjected to SDS PAGE followed by western blot with 86082-3-RR (Lum antibody) at dilution of 1:5000 incubated at room temperature for 1.5 hours. This data was developed using the same antibody clone with 86082-3-PBS in a different storage buffer formulation.