

For Research Use Only

Lumican Recombinant antibody

Catalog Number: 86082-3-RR



Basic Information

Catalog Number: 86082-3-RR	GenBank Accession Number: NM_008524.2	Purification Method: Protein A purification
Size: 100ul , Concentration: 1000 µg/ml by Nanodrop;	GeneID (NCBI): 17022	CloneNo.: 250614E5
Source: Rabbit	UNIPROT ID: P51885	Recommended Dilutions: WB: 1:2000-1:10000
Isotype: IgG	Full Name: lumican	
Immunogen Catalog Number: EG2481	Calculated MW: 38 kDa	
	Observed MW: 50-100 kDa	

Applications

Tested Applications: WB, ELISA	Positive Controls: WB : Recombinant protein, mouse skin tissue
Species Specificity: mouse	

Background Information

umican (LUM), a member of the small leucine-rich proteoglycan (SLRP) family, is one of the major extracellular components in interstitial collagenous matrices of the corneal stroma, aorta, skin, skeletal muscle, lung, kidney, bone, cartilage, and intervertebral discs. SLRPs constitute an important fraction of noncollagenous extracellular matrix proteins and have important effects on cell behavior. Lumican regulates collagenous matrix assembly as a keratan sulfate proteoglycan in the cornea and may exist as a glycoprotein in the connective tissues of other organs. Posttranslational modifications lumican goes through can increase its apparent molecular weight to 50-90 kDa. Studies show that lumican participates in the maintenance of tissue homeostasis and modulates cellular functions including cell proliferation, migration, and differentiation. (PMID: 18949819; 22252641; 9761754; 22365843)

Storage

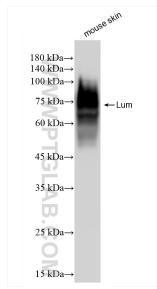
Storage:
Store at -20°C. Stable for one year after shipment.
Storage Buffer:
PBS with 0.02% sodium azide and 50% glycerol, pH7.3
Aliquoting is unnecessary for -20°C storage

*** 20ul sizes contain 0.1% BSA

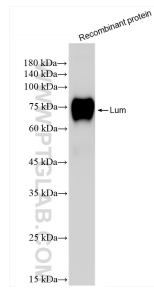
For technical support and original validation data for this product please contact:
T: 1 (888) 4PTGLAB (1-888-478-4522) (toll free in USA), or 1(312) 455-8498 (outside USA)
E: proteintech@ptglab.com
W: ptglab.com

This product is exclusively available under Proteintech Group brand and is not available to purchase from any other manufacturer.

Selected Validation Data



Various lysates were subjected to SDS PAGE followed by western blot with 86082-3-RR (Lum antibody) at dilution of 1:5000 incubated at room temperature for 1.5 hours.



Recombinant protein were subjected to SDS PAGE followed by western blot with 86082-3-RR (Lum antibody) at dilution of 1:5000 incubated at room temperature for 1.5 hours.