

For Research Use Only

# PDS5B Recombinant monoclonal antibody, PBS Only (Detector)

Catalog Number: 86088-3-PBS



## Basic Information

**Catalog Number:**

86088-3-PBS

**Size:**

100ug, Concentration: 1 mg/ml by Nanodrop;

**Source:**

Rabbit

**Isotype:**

IgG

**Immunogen Catalog Number:**

AG27977

**GenBank Accession Number:**

NM\_015032

**GeneID (NCBI):**

23047

**UNIPROT ID:**

Q9NTI5

**Full Name:**

PDS5, regulator of cohesion maintenance, homolog B (S. cerevisiae)

**Calculated MW:**

165 aa

**Purification Method:**

Protein A purification

**CloneNo.:**

250461B10

## Applications

**Tested Applications:**

Sandwich ELISA, Indirect ELISA, Sample test

**Species Specificity:**

human

## Product Information

86088-3-PBS targets PDS5B as part of a matched antibody pair:

MP02392-1: 86088-1-PBS capture and 86088-3-PBS detection (validated in Sandwich ELISA)

Unconjugated rabbit recombinant monoclonal antibody in PBS only (BSA and azide free) storage buffer at a concentration of 1 mg/mL, ready for conjugation. Created using Proteintech's proprietary in-house recombinant technology. Recombinant production enables unrivalled batch-to-batch consistency, easy scale-up, and future security of supply.

This conjugation ready format makes antibodies ideal for use in many applications including: ELISAs, multiplex assays requiring matched pairs, mass cytometry, and multiplex imaging applications. Antibody use should be optimized by the end user for each application and assay.

## Storage

**Storage:**

Store at -80°C.

**Storage Buffer:**

PBS only, pH7.3

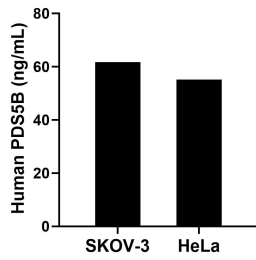
For technical support and original validation data for this product please contact:

T: 1 (888) 4PTGLAB (1-888-478-4522) (toll free in USA), or 1(312) 455-8498 (outside USA)

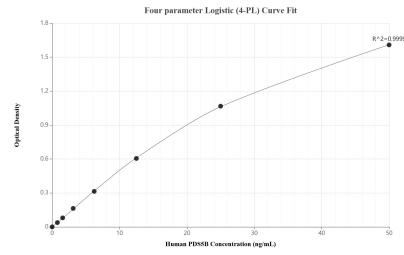
E: [proteintech@ptglab.com](mailto:proteintech@ptglab.com)  
W: [ptglab.com](http://ptglab.com)

**This product is exclusively available under Proteintech Group brand and is not available to purchase from any other manufacturer.**

## Selected Validation Data



The mean PDS5B concentration was determined to be 61.70 ng/mL in SKOV-3 cell extract based on a 1.20 mg/mL extract load and 55.20 ng/mL in HeLa cell extract based on a 0.90 mg/mL extract load.



Sandwich ELISA standard curve of MP02392-1, Human PDS5B Recombinant Matched Antibody Pair - PBS only. 86088-1-PBS was coated to a plate as the capture antibody and incubated with serial dilutions of standard Ag27977. 86088-3-PBS was HRP conjugated as the detection antibody. Range: 0.78-50 ng/mL