

For Research Use Only

# GPR17 Recombinant antibody, PBS Only

Catalog Number: 86089-1-PBS



## Basic Information

<b>Catalog Number:</b> 86089-1-PBS	<b>GenBank Accession Number:</b> BC031653	<b>Purification Method:</b> Protein A purification
<b>Size:</b> 100ug , Concentration: 1 mg/ml by Nanodrop;	<b>GeneID (NCBI):</b> 2840	<b>CloneNo.:</b> 250471E11
<b>Source:</b> Rabbit	<b>UNIPROT ID:</b> Q13304	
<b>Isotype:</b> IgG	<b>Full Name:</b> G protein-coupled receptor 17	
<b>Immunogen Catalog Number:</b> AG4106	<b>Calculated MW:</b> 367 aa, 41 kDa	
	<b>Observed MW:</b> 48 kDa	

## Applications

**Tested Applications:**  
WB, Indirect ELISA

**Species Specificity:**  
human, mouse, rat

## Background Information

GPR17 is a G protein-coupled receptor (GPCR) that plays a significant role in various physiological processes, particularly in the central nervous system (CNS). GPR17 is considered a modulator of CNS myelination and is involved in reconstructing and repairing demyelinating plaques caused by ongoing inflammatory processes, such as in multiple sclerosis (MS). It is present in nerve cells and precursor oligodendrocyte cells, playing a role in the differentiation and maturation of oligodendrocytes (PMID: 32182666). GPR17 is a multifaceted GPCR with implications in immune regulation, glucose metabolism, neurodegenerative diseases, and potentially in treating anxiety disorders.

## Storage

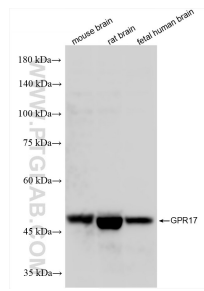
**Storage:**  
Store at -80°C.

**Storage Buffer:**  
PBS only, pH7.3

For technical support and original validation data for this product please contact:  
T: 1 (888) 4PTGLAB (1-888-478-4522) (toll free in USA), or 1(312) 455-8498 (outside USA)  
E: [proteintech@ptglab.com](mailto:proteintech@ptglab.com)  
W: [ptglab.com](http://ptglab.com)

This product is exclusively available under Proteintech Group brand and is not available to purchase from any other manufacturer.

## Selected Validation Data



mouse brain tissue were subjected to SDS PAGE followed by western blot with 86089-1-RR (GPR17 antibody) at dilution of 1:10000 incubated at room temperature for 1.5 hours. This data was developed using the same antibody clone with 86089-1-PBS in a different storage buffer formulation.