

For Research Use Only

MAN1A1 Recombinant antibody, PBS Only (Capture)

Catalog Number: 86094-1-PBS



Basic Information

Catalog Number: 86094-1-PBS	GenBank Accession Number: BC065827	Purification Method: Protein A purification
Size: 100ug , Concentration: 1 mg/ml by Nanodrop;	GeneID (NCBI): 4121	CloneNo.: 250444H2
Source: Rabbit	UNIPROT ID: P33908	
Isotype: IgG	Full Name: mannosidase, alpha, class 1A, member 1	
Immunogen Catalog Number: AG20060	Calculated MW: 653 aa, 73 kDa	
	Observed MW: 68 kDa	

Applications

Tested Applications:
WB, IF/ICC, Sandwich ELISA, Indirect ELISA, Sample test

Species Specificity:
human

Product Information

86094-1-PBS targets MAN1A1 as part of a matched antibody pair:

MP02326-1: 86094-1-PBS capture and 86094-3-PBS detection (validated in Sandwich ELISA)

Unconjugated rabbit recombinant monoclonal antibody in PBS only (BSA and azide free) storage buffer at a concentration of 1 mg/mL, ready for conjugation. Created using Proteintech's proprietary in-house recombinant technology. Recombinant production enables unrivalled batch-to-batch consistency, easy scale-up, and future security of supply.

This conjugation ready format makes antibodies ideal for use in many applications including: ELISAs, multiplex assays requiring matched pairs, mass cytometry, and multiplex imaging applications. Antibody use should be optimized by the end user for each application and assay.

Background Information

MAN1A1, also known as HUMM3, HUMM9, MAN9, belongs to the glycosyl hydrolase 47 family. MAN1A1 is a type II transmembrane protein and catalyzes the hydrolysis of three terminal mannose residues from peptide-bound Man(9)-GlcNAc(2) oligosaccharides. MAN1A1 is a tumor-suppressor and low levels of expression of MAN1A1 correlate with poor prognosis in breast cancer patients (PMID: 29381688).

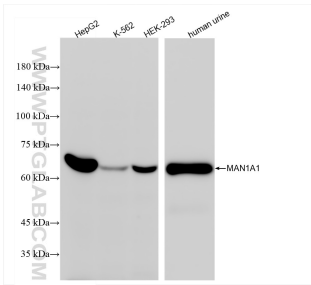
Storage

Storage:
Store at -80°C.
Storage Buffer:
PBS only, pH7.3

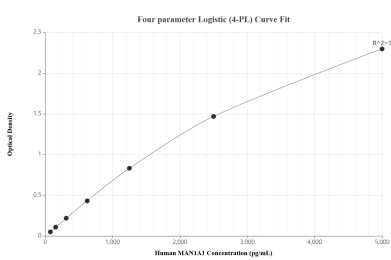
For technical support and original validation data for this product please contact:
T: 1 (888) 4PTGLAB (1-888-478-4522) (toll free in USA), or 1(312) 455-8498 (outside USA)
E: proteintech@ptglab.com
W: ptglab.com

This product is exclusively available under Proteintech Group brand and is not available to purchase from any other manufacturer.

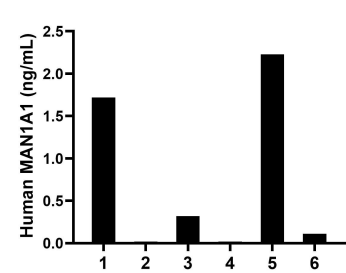
Selected Validation Data



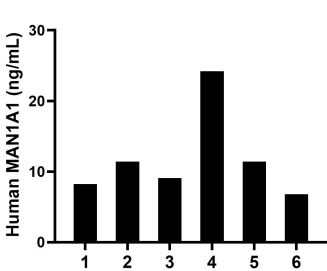
Various lysates were subjected to SDS PAGE followed by western blot with 86094-1-RR (MAN1A1 antibody) at dilution of 1:10000 incubated at room temperature for 1.5 hours. This data was developed using the same antibody clone with 86094-1-PBS in a different storage buffer formulation.



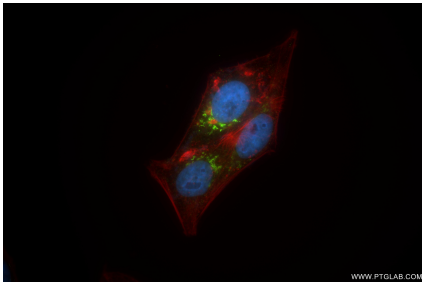
Sandwich ELISA standard curve of MP02326-1, Human MAN1A1 Recombinant Matched Antibody Pair - PBS only. 86094-1-PBS was coated to a plate as the capture antibody and incubated with serial dilutions of standard Ag20060. 86094-3-PBS was HRP conjugated as the detection antibody. Range: 78.1-5000 pg/mL.



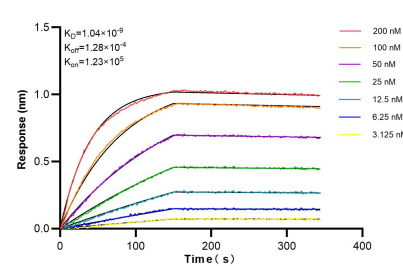
Urine of six individual healthy human donors was measured. The MAN1A1 concentration of detected samples was determined to be 0.7 ng/mL with a range of ND-2.2 ng/mL.



Serum of six individual healthy human donors was measured. The MAN1A1 concentration of detected samples was determined to be 11.9 ng/mL with a range of 6.8-24.2 ng/mL.



Immunofluorescent analysis of (4% PFA) fixed HepG2 cells using MAN1A1 antibody (86094-1-RR, Clone: 250444H2) at dilution of 1:1000 and Coralite®488-Conjugated Goat Anti-Rabbit IgG(H+L) (SA00013-2), CL594-Phalloidin (red). This data was developed using the same antibody clone with 86094-1-PBS in a different storage buffer formulation.



Bi-layer interferometry (BLI) kinetic assays of 86094-1-RR against Human MAN1A1 were performed. The affinity constant is 1.04 nM.