

For Research Use Only

MAN1A1 Recombinant antibody, PBS Only (Detector)

Catalog Number: 86094-3-PBS



Basic Information

Catalog Number: 86094-3-PBS	GenBank Accession Number: BC065827	Purification Method: Protein A purification
Size: 100ug , Concentration: 1 mg/ml by Nanodrop;	GeneID (NCBI): 4121	CloneNo.: 250444F10
Source: Rabbit	UNIPROT ID: P33908	
Isotype: IgG	Full Name: mannosidase, alpha, class 1A, member 1	
Immunogen Catalog Number: AG20060	Calculated MW: 653 aa, 73 kDa	

Applications

Tested Applications:
Sandwich ELISA, Indirect ELISA, Sample test

Species Specificity:
human

Product Information

86094-3-PBS targets MAN1A1 as part of a matched antibody pair:

MP02326-1: 86094-1-PBS capture and 86094-3-PBS detection (validated in Sandwich ELISA)

Unconjugated rabbit recombinant monoclonal antibody in PBS only (BSA and azide free) storage buffer at a concentration of 1 mg/mL, ready for conjugation. Created using Proteintech's proprietary in-house recombinant technology. Recombinant production enables unrivalled batch-to-batch consistency, easy scale-up, and future security of supply.

This conjugation ready format makes antibodies ideal for use in many applications including: ELISAs, multiplex assays requiring matched pairs, mass cytometry, and multiplex imaging applications. Antibody use should be optimized by the end user for each application and assay.

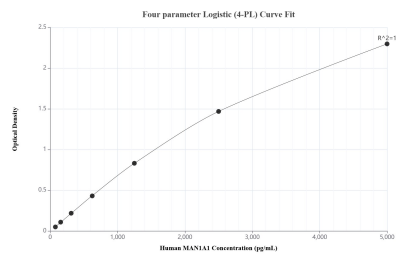
Storage

Storage:
Store at -80°C.
Storage Buffer:
PBS only, pH7.3

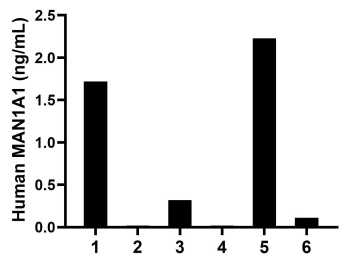
For technical support and original validation data for this product please contact:
T: 1 (888) 4PTGLAB (1-888-478-4522) (toll free in USA), or 1(312) 455-8498 (outside USA)
E: proteintech@ptglab.com
W: ptglab.com

This product is exclusively available under Proteintech Group brand and is not available to purchase from any other manufacturer.

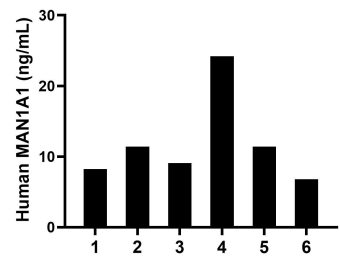
Selected Validation Data



Sandwich ELISA standard curve of MP02326-1, Human MAN1A1 Recombinant Matched Antibody Pair - PBS only. 86094-1-PBS was coated to a plate as the capture antibody and incubated with serial dilutions of standard Ag20060. 86094-3-PBS was HRP conjugated as the detection antibody. Range: 78.1-5000 pg/mL.



Urine of six individual healthy human donors was measured. The MAN1A1 concentration of detected samples was determined to be 0.7 ng/mL with a range of ND-2.2 ng/mL.



Serum of six individual healthy human donors was measured. The MAN1A1 concentration of detected samples was determined to be 11.9 ng/mL with a range of 6.8-24.2 ng/mL.