

For Research Use Only

# PARP10 Recombinant antibody, PBS Only

Catalog Number: 86096-1-PBS



## Basic Information

<b>Catalog Number:</b> 86096-1-PBS	<b>GenBank Accession Number:</b> BC136542	<b>Purification Method:</b> Protein A purification
<b>Size:</b> 100ug , Concentration: 1 mg/ml by Nanodrop;	<b>GeneID (NCBI):</b> 84875	<b>CloneNo.:</b> 250454D4
<b>Source:</b> Rabbit	<b>UNIPROT ID:</b> Q53GL7	
<b>Isotype:</b> IgG	<b>Full Name:</b> poly (ADP-ribose) polymerase family, member 10	
<b>Immunogen Catalog Number:</b> AG23457	<b>Observed MW:</b> 150 kDa	

## Applications

**Tested Applications:**  
WB, Indirect ELISA

**Species Specificity:**  
human

## Background Information

PARP10 (Poly(ADP-ribose) polymerase family member 10) is a mono-ADP-ribosyltransferase that belongs to the PARP family. It regulates a variety of cellular functions, including gene transcription, DNA repair, and cell cycle control, by catalyzing ADP-ribosylation reactions. PARP10 is distributed in both the nucleus and cytoplasm, participating in the cellular response to DNA damage. In particular, its expression level significantly increases in response to UV-induced DNA damage. Additionally, PARP10 plays a crucial role in the antiviral response, being highly upregulated by interferon (IFN) to inhibit the replication of certain viruses and block protein translation during viral replication. PARP10 is also involved in immune regulation, interacting with NEMO to block the NF-κB signaling pathway and the production of pro-inflammatory cytokines.

## Storage

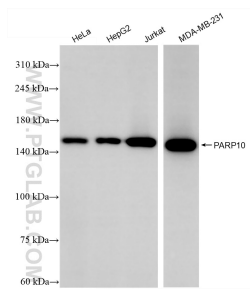
**Storage:**  
Store at -80°C.

**Storage Buffer:**  
PBS only, pH7.3

For technical support and original validation data for this product please contact:  
T: 1 (888) 4PTGLAB (1-888-478-4522) (toll free in USA), or 1(312) 455-8498 (outside USA)  
E: proteintech@ptglab.com  
W: ptglab.com

This product is exclusively available under Proteintech Group brand and is not available to purchase from any other manufacturer.

## Selected Validation Data



Various lysates were subjected to SDS PAGE followed by western blot with 86096-1-RR (PARP10 antibody) at dilution of 1:5000 incubated at room temperature for 1.5 hours. This data was developed using the same antibody clone with 86096-1-PBS in a different storage buffer formulation.