

For Research Use Only

MAG Recombinant antibody, PBS Only (Capture)

Catalog Number: 86097-2-PBS



Basic Information

Catalog Number: 86097-2-PBS	GenBank Accession Number: NM_002361.3	Purification Method: Protein A purification
Size: 100ug , Concentration: 1 mg/ml by Nanodrop;	GeneID (NCBI): 4099	CloneNo.: 250555H1
Source: Rabbit	UNIPROT ID: P20916-1	
Isotype: IgG	Full Name: myelin associated glycoprotein	
Immunogen Catalog Number: EG2975	Calculated MW: 69 kDa	

Applications

Tested Applications:
Sandwich ELISA, Indirect ELISA, Sample test

Species Specificity:
human

Product Information

86097-2-PBS targets MAG as part of a matched antibody pair:

MP02467-1: 86097-2-PBS capture and 86097-1-PBS detection (validated in Sandwich ELISA)

Unconjugated rabbit recombinant monoclonal antibody in PBS only (BSA and azide free) storage buffer at a concentration of 1 mg/mL, ready for conjugation. Created using Proteintech's proprietary in-house recombinant technology. Recombinant production enables unrivalled batch-to-batch consistency, easy scale-up, and future security of supply.

This conjugation ready format makes antibodies ideal for use in many applications including: ELISAs, multiplex assays requiring matched pairs, mass cytometry, and multiplex imaging applications. Antibody use should be optimized by the end user for each application and assay.

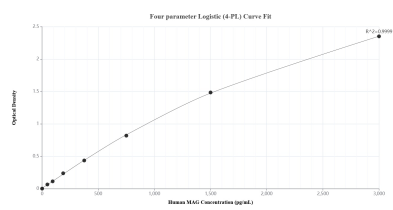
Storage

Storage:
Store at -80°C.
Storage Buffer:
PBS only, pH7.3

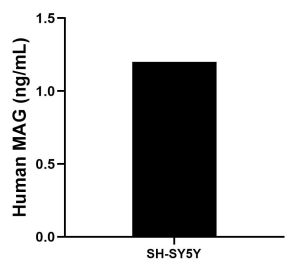
For technical support and original validation data for this product please contact:
T: 1 (888) 4PTGLAB (1-888-478-4522) (toll free in USA), or 1(312) 455-8498 (outside USA)
E: proteintech@ptglab.com
W: ptglab.com

This product is exclusively available under Proteintech Group brand and is not available to purchase from any other manufacturer.

Selected Validation Data



Sandwich ELISA standard curve of MP02467-1, Human MAG Recombinant Matched Antibody Pair - PBS only. 86097-2-PBS was coated to a plate as the capture antibody and incubated with serial dilutions of standard Eg2975. 86097-1-PBS was HRP conjugated as the detection antibody. Range: 46.9-3000 pg/mL.



The mean MAG concentration was determined to be 1.2 ng/mL in SH-SY5Y cell extract based on a 3.2 mg/mL extract load.