

For Research Use Only

SNRPB Recombinant antibody, PBS Only

Catalog Number:86099-1-PBS



Basic Information

Catalog Number: 86099-1-PBS	GenBank Accession Number: BC003530	Purification Method: Protein A purification
Size: 100ug, Concentration: 1 mg/ml by Nanodrop;	GeneID (NCBI): 6628	CloneNo.: 250577G8
Source: Rabbit	UNIPROT ID: P14678	
Isotype: IgG	Full Name: small nuclear ribonucleoprotein polypeptides B and B1	
Immunogen Catalog Number: AG10298	Calculated MW: 234aa,25 kDa; 285aa,30 kDa	
	Observed MW: 25-30 kDa	

Applications

Tested Applications:
WB, IF/ICC, Indirect ELISA

Species Specificity:
human, mouse

Background Information

SNRPB (Small Nuclear Ribonucleoprotein Polypeptides B and B1) is a core component of the spliceosome, a complex molecular machine that plays a critical role in pre-mRNA splicing. This process is essential for the removal of introns and the joining of exons to produce mature mRNA molecules.

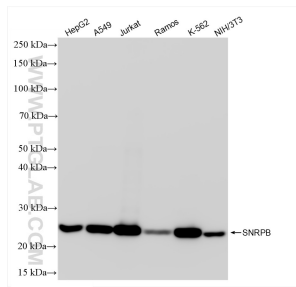
Storage

Storage:
Store at -80°C.
Storage Buffer:
PBS only, pH7.3

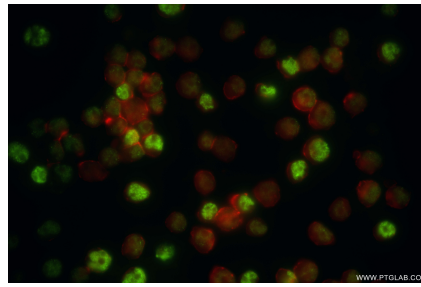
For technical support and original validation data for this product please contact:
T: 1 (888) 4PTGLAB (1-888-478-4522) (toll free in USA), or 1(312) 455-8498 (outside USA) E: proteintech@ptglab.com
W: ptglab.com

This product is exclusively available under Proteintech Group brand and is not available to purchase from any other manufacturer.

Selected Validation Data



Various lysates were subjected to SDS PAGE followed by western blot with 86099-1-RR (SNRNPB antibody) at dilution of 1:10000 incubated at room temperature for 1.5 hours. This data was developed using the same antibody clone with 86099-1-PBS in a different storage buffer formulation.



Immunofluorescent analysis of (4% PFA) fixed Jurkat cells using SNRNPB antibody (86099-1-RR, Clone: 250577G8) at dilution of 1:800 and CoraLite® 488-Conjugated Goat Anti-Rabbit IgG(H+L) (SA00013-2), CL594-Phalloidin (red). This data was developed using the same antibody clone with 86099-1-PBS in a different storage buffer formulation.