

For Research Use Only

# MCM10 Recombinant antibody

Catalog Number: 86103-1-RR



## Basic Information

**Catalog Number:**

86103-1-RR

**Size:**

100ul , Concentration: 1000 µg/ml by  
Nanodrop;

**Source:**

Rabbit

**Isotype:**

IgG

**Immunogen Catalog Number:**

AG2899

**GenBank Accession Number:**

BC009108

**GeneID (NCBI):**

55388

**UNIPROT ID:**

Q7L590

**Full Name:**

minichromosome maintenance  
complex component 10

**Calculated MW:**

874 aa, 97 kDa

**Observed MW:**

97-105 kDa

**Purification Method:**

Protein A purification

**CloneNo.:**

250423A12

**Recommended Dilutions:**

WB: 1:5000-1:50000

## Applications

**Tested Applications:**

WB, ELISA

**Species Specificity:**

human

**Positive Controls:**

WB : HeLa cells, HEK-293T cells, Jurkat cells, Ramos  
cells

## Background Information

MCM10, also named as HsMCM10, belongs to the MCM10 family. It acts as a replication initiation factor that brings together the MCM2-7 helicase and the DNA polymerase alpha/primase complex in order to initiate DNA replication. Additionally, it plays a role in preventing DNA damage during replication and is essential for the integrity of the RECQ4-MCM replicative helicase complex. It mediates RECQ4 association with MCM2-7 helicase complex during DNA replication.

## Storage

**Storage:**

Store at -20°C. Stable for one year after shipment.

**Storage Buffer:**

PBS with 0.02% sodium azide and 50% glycerol, pH7.3

Aliquoting is unnecessary for -20°C storage

\*\*\* 20ul sizes contain 0.1% BSA

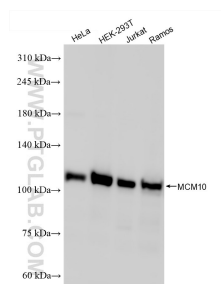
For technical support and original validation data for this product please contact:

T: 1 (888) 4PTGLAB (1-888-478-4522) (toll free  
in USA), or 1(312) 455-8498 (outside USA)

E: proteintech@ptglab.com  
W: ptglab.com

This product is exclusively available under Proteintech  
Group brand and is not available to purchase from any  
other manufacturer.

## Selected Validation Data



Various lysates were subjected to SDS PAGE followed by western blot with 86103-1-RR (MCM10 antibody) at dilution of 1:30000 incubated at room temperature for 1.5 hours.