

For Research Use Only

# ERO1LB Recombinant antibody

Catalog Number: 86104-1-RR



## Basic Information

<b>Catalog Number:</b> 86104-1-RR	<b>GenBank Accession Number:</b> NM_019891.3	<b>Purification Method:</b> Protein A purification
<b>Size:</b> 100ul , Concentration: 1000 µg/ml by Nanodrop;	<b>GeneID (NCBI):</b> 56605	<b>CloneNo.:</b> 250655G4
<b>Source:</b> Rabbit	<b>UNIPROT ID:</b> Q86YB8	<b>Recommended Dilutions:</b> WB: 1:6000-1:10000
<b>Isotype:</b> IgG	<b>Full Name:</b> ERO1-like beta (S. cerevisiae)	
<b>Immunogen Catalog Number:</b> EG2622	<b>Calculated MW:</b> 56 kDa	
	<b>Observed MW:</b> 56 kDa	

## Applications

<b>Tested Applications:</b> WB, ELISA	<b>Positive Controls:</b> WB : PC-3 cells, IM-9 cells, HeLa cells
<b>Species Specificity:</b> human	

## Background Information

Endoplasmic reticulum oxidoreductases (Eros) are essential for the formation of disulfide bonds. Mammals express two related Ero proteins, Ero1L alpha and Ero1L beta. The two homologous proteins can form homodimers and mixed heterodimers. ERO 1-La and -β are highly expressed in organs with a high demand for secretion, consistent with their roles in oxidative folding of ER proteins.

## Storage

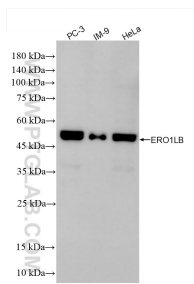
**Storage:**  
Store at -20°C. Stable for one year after shipment.  
**Storage Buffer:**  
PBS with 0.02% sodium azide and 50% glycerol, pH7.3  
Aliquoting is unnecessary for -20°C storage

\*\*\* 20ul sizes contain 0.1% BSA

For technical support and original validation data for this product please contact:  
T: 1 (888) 4PTGLAB (1-888-478-4522) (toll free in USA), or 1(312) 455-8498 (outside USA)  
E: [proteintech@ptglab.com](mailto:proteintech@ptglab.com)  
W: [ptglab.com](http://ptglab.com)

This product is exclusively available under Proteintech Group brand and is not available to purchase from any other manufacturer.

## Selected Validation Data



Various lysates were subjected to SDS PAGE followed by western blot with 86104-1-RR (ERO1LB antibody) at dilution of 1:10000 incubated at room temperature for 1.5 hours.