

For Research Use Only

SHH Recombinant antibody

Catalog Number: 86106-1-RR



Basic Information

Catalog Number: 86106-1-RR	GenBank Accession Number: NM_000193	Purification Method: Protein A purification
Size: 100ul , Concentration: 1000 µg/ml by Nanodrop;	GeneID (NCBI): 6469	CloneNo.: 250549A9
Source: Rabbit	UNIPROT ID: Q15465	Recommended Dilutions: WB: 1:5000-1:50000
Isotype: IgG	Full Name: sonic hedgehog homolog (Drosophila)	
Immunogen Catalog Number: EG4010	Calculated MW: 50 kDa	
	Observed MW: 50-60 kDa	

Applications

Tested Applications: WB, ELISA	Positive Controls: WB : mouse liver tissue, rat liver tissue
Species Specificity: human, mouse, rat	

Background Information

SHH, also named as HHG-1, belongs to the hedgehog family. SHH binds to the patched (PTC) receptor, which functions in association with smoothened (SMO), to activate the transcription of target genes. In the absence of SHH, PTC represses the constitutive signaling activity of SMO. It regulates another target, the gli oncogene. The Shh protein is synthesized as a 45-kDa precursor that undergoes an autocatalytic processing event that produces a 19-kDa N-terminal product, responsible for all signaling activities, and a 25-kDa C-terminal fragment (PMID:10753901, PMID: 16282375). SHH can be detected precursor protein as 48-51-kDa polypeptides (PMID: 15292211).

Storage

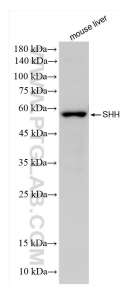
Storage:
Store at -20°C. Stable for one year after shipment.
Storage Buffer:
PBS with 0.02% sodium azide and 50% glycerol, pH7.3
Aliquoting is unnecessary for -20°C storage

*** 20ul sizes contain 0.1% BSA

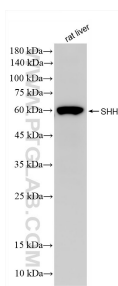
For technical support and original validation data for this product please contact:
T: 1 (888) 4PTGLAB (1-888-478-4522) (toll free in USA), or 1(312) 455-8498 (outside USA)
E: proteintech@ptglab.com
W: ptglab.com

This product is exclusively available under Proteintech Group brand and is not available to purchase from any other manufacturer.

Selected Validation Data



mouse liver tissue were subjected to SDS PAGE followed by western blot with 86106-1-RR (SHH antibody) at dilution of 1:10000 incubated at room temperature for 1.5 hours.



rat liver tissue were subjected to SDS PAGE followed by western blot with 86106-1-RR (SHH antibody) at dilution of 1:10000 incubated at room temperature for 1.5 hours.