

For Research Use Only

KLK6 Recombinant antibody, PBS Only (Detector)

Catalog Number: 86108-1-PBS



Basic Information

| | | |
|---|---|---|
| Catalog Number: 86108-1-PBS | GenBank Accession Number: NM_001012964.2 | Purification Method: Protein A purification |
| Size: 100ug , Concentration: 1 mg/ml by Nanodrop; | GeneID (NCBI): 5653 | CloneNo.: 250322G7 |
| Source: Rabbit | UNIPROT ID: Q92876-1 | |
| Isotype: IgG | Full Name: kallikrein-related peptidase 6 | |
| Immunogen Catalog Number: EG2826 | Calculated MW: 27 kDa | |

Applications

Tested Applications:
Sandwich ELISA, Indirect ELISA, Sample test

Species Specificity:
human

Product Information

86108-1-PBS targets KLK6 as part of a matched antibody pair:

MP02265-1: 86108-2-PBS capture and 86108-1-PBS detection (validated in Sandwich ELISA)

Unconjugated rabbit recombinant monoclonal antibody in PBS only (BSA and azide free) storage buffer at a concentration of 1 mg/mL, ready for conjugation. Created using Proteintech's proprietary in-house recombinant technology. Recombinant production enables unrivalled batch-to-batch consistency, easy scale-up, and future security of supply.

This conjugation ready format makes antibodies ideal for use in many applications including: ELISAs, multiplex assays requiring matched pairs, mass cytometry, and multiplex imaging applications. Antibody use should be optimized by the end user for each application and assay.

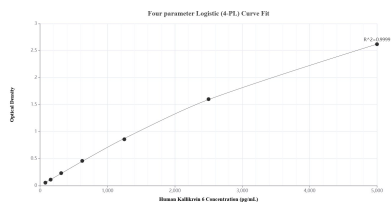
Storage

Storage:
Store at -80°C.
Storage Buffer:
PBS only, pH7.3

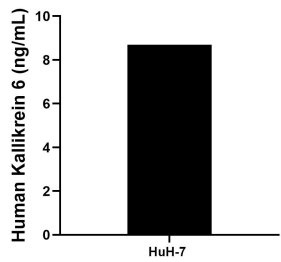
For technical support and original validation data for this product please contact:
T: 1 (888) 4PTGLAB (1-888-478-4522) (toll free in USA), or 1(312) 455-8498 (outside USA)
E: proteintech@ptglab.com
W: ptglab.com

This product is exclusively available under Proteintech Group brand and is not available to purchase from any other manufacturer.

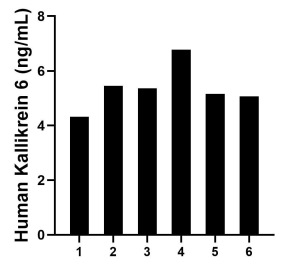
Selected Validation Data



Sandwich ELISA standard curve of MP02265-1, Human Kallikrein 6 Recombinant Matched Antibody Pair - PBS only. 86108-2-PBS was coated to a plate as the capture antibody and incubated with serial dilutions of standard Eg2826. 86108-1-PBS was HRP conjugated as the detection antibody. Range: 78.1-5000 pg/mL



The mean Kallikrein 6 concentration was determined to be 8.7 ng/mL in HuH-7 cell extract based on a 1.4 mg/mL extract load.



Serum of six individual healthy human donors was measured. The Kallikrein 6 concentration of detected samples was determined to be 5.4 ng/mL with a range of 4.3-6.8 ng/mL.