

For Research Use Only

Enpep Recombinant antibody

Catalog Number: 86110-1-RR



Basic Information

Catalog Number: 86110-1-RR	GenBank Accession Number: NM_007934.3	Purification Method: Protein A purification
Size: 100ul , Concentration: 1000 µg/ml by Nanodrop;	GeneID (NCBI): 13809	CloneNo.: 250659A5
Source: Rabbit	UNIPROT ID: P16406	Recommended Dilutions: WB: 1:2000-1:10000
Isotype: IgG	Full Name: glutamyl aminopeptidase	
Immunogen Catalog Number: EG4233	Calculated MW: 108 kDa	
	Observed MW: 140 kDa	

Applications

Tested Applications: WB, ELISA	Positive Controls: WB : mouse kidney tissue, human kidney tissue
Species Specificity: human, mouse	

Background Information

The gene ENPEP encodes glutamyl aminopeptidase, which can cut N-terminal aspartic acid from angiotensin II, and is related to tumorigenesis and immune microenvironment. ENPEP is a potential biomarker to classify patients' response to ICIs treatment (PMID: 34862755). This protein has multiple glycosylation sites: 4 N-linked glycans (4 sites), 1 O-linked glycan (1 site).

Storage

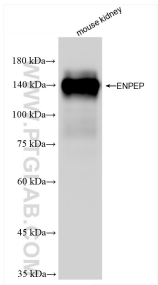
Storage:
Store at -20°C. Stable for one year after shipment.
Storage Buffer:
PBS with 0.02% sodium azide and 50% glycerol, pH7.3
Aliquoting is unnecessary for -20°C storage

*** 20ul sizes contain 0.1% BSA

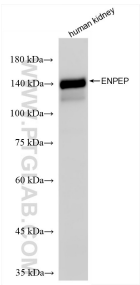
For technical support and original validation data for this product please contact:
T: 1 (888) 4PTGLAB (1-888-478-4522) (toll free in USA), or 1(312) 455-8498 (outside USA)
E: proteintech@ptglab.com
W: ptglab.com

This product is exclusively available under Proteintech Group brand and is not available to purchase from any other manufacturer.

Selected Validation Data



Various lysates were subjected to SDS PAGE followed by western blot with 86110-1-RR (Enpep antibody) at dilution of 1:5000 incubated at room temperature for 1.5 hours.



Various lysates were subjected to SDS PAGE followed by western blot with 86110-1-RR (Enpep antibody) at dilution of 1:5000 incubated at room temperature for 1.5 hours.