

For Research Use Only

CPE Recombinant antibody, PBS Only

Catalog Number: 86111-1-PBS



Basic Information

Catalog Number:

86111-1-PBS

Size:

100ug , Concentration: 1 mg/ml by Nanodrop;

Source:

Rabbit

Isotype:

IgG

Immunogen Catalog Number:

EG2989

GenBank Accession Number:

NM_001873.4

GeneID (NCBI):

1363

UNIPROT ID:

P16870-1

Full Name:

carboxypeptidase E

Calculated MW:

53 kDa

Observed MW:

50-55 kDa

Purification Method:

Protein A purification

CloneNo.:

250680F12

Applications

Tested Applications:

WB, Indirect ELISA

Species Specificity:

human, mouse, rat

Background Information

CPE(Carboxypeptidase E) is also named as CPH.It belongs to the peptidase M14 family and is involved in the biosynthesis of peptide hormones and neurotransmitters, including insulin.The deduced 476-amino acid human protein contains an N-terminal signal peptide, followed by a 'pro' sequence, a polyarginine stretch, and 2 potential N-glycosylation sites.

Storage

Storage:

Store at -80°C.

Storage Buffer:

PBS only, pH7.3

For technical support and original validation data for this product please contact:

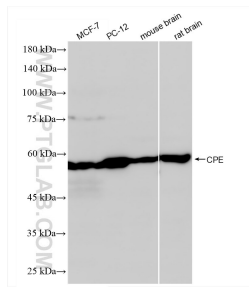
T: 1 (888) 4PTGLAB (1-888-478-4522) (toll free in USA), or 1(312) 455-8498 (outside USA)

E: proteintech@ptglab.com

W: ptglab.com

This product is exclusively available under Proteintech Group brand and is not available to purchase from any other manufacturer.

Selected Validation Data



Various lysates were subjected to SDS PAGE followed by western blot with 86111-1-RR (CPE antibody) at dilution of 1:5000 incubated at room temperature for 1.5 hours. This data was developed using the same antibody clone with 86111-1-PBS in a different storage buffer formulation.