

For Research Use Only

CPE Recombinant antibody

Catalog Number: 86111-1-RR



Basic Information

Catalog Number: 86111-1-RR	GenBank Accession Number: NM_001873.4	Purification Method: Protein A purification
Size: 100ul , Concentration: 1000 µg/ml by Nanodrop;	GeneID (NCBI): 1363	CloneNo.: 250680F12
Source: Rabbit	UNIPROT ID: P16870-1	Recommended Dilutions: WB: 1:2000-1:10000
Isotype: IgG	Full Name: carboxypeptidase E	
Immunogen Catalog Number: EG2989	Calculated MW: 53 kDa	
	Observed MW: 50-55 kDa	

Applications

Tested Applications: WB, ELISA	Positive Controls: WB : MCF-7 cells, PC-12 cells, mouse brain tissue, rat brain tissue
Species Specificity: human, mouse, rat	

Background Information

CPE(Carboxypeptidase E) is also named as CPH.It belongs to the peptidase M14 family and is involved in the biosynthesis of peptide hormones and neurotransmitters, including insulin.The deduced 476-amino acid human protein contains an N-terminal signal peptide, followed by a 'pro' sequence, a polyarginine stretch, and 2 potential N-glycosylation sites.

Storage

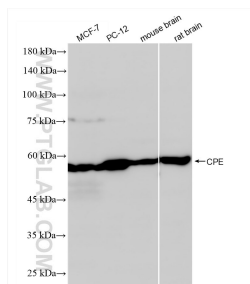
Storage:
Store at -20°C. Stable for one year after shipment.
Storage Buffer:
PBS with 0.02% sodium azide and 50% glycerol, pH7.3
Aliquoting is unnecessary for -20°C storage

*** 20ul sizes contain 0.1% BSA

For technical support and original validation data for this product please contact:
T: 1 (888) 4PTGLAB (1-888-478-4522) (toll free in USA), or 1(312) 455-8498 (outside USA)
E: proteintech@ptglab.com
W: ptglab.com

This product is exclusively available under Proteintech Group brand and is not available to purchase from any other manufacturer.

Selected Validation Data



Various lysates were subjected to SDS PAGE followed by western blot with 86111-1-RR (CPE antibody) at dilution of 1:5000 incubated at room temperature for 1.5 hours.