

For Research Use Only

# Alpha 1B-Glycoprotein Recombinant antibody, PBS Only (Detector)

Catalog Number: 86112-1-PBS



## Basic Information

<b>Catalog Number:</b> 86112-1-PBS	<b>GenBank Accession Number:</b> NM_130786.4	<b>Purification Method:</b> Protein A purification
<b>Size:</b> 100ug, Concentration: 1 mg/ml by Nanodrop;	<b>GeneID (NCBI):</b> 1	<b>CloneNo.:</b> 250024H3
<b>Source:</b> Rabbit	<b>UNIPROT ID:</b> P04217-1	
<b>Isotype:</b> IgG	<b>Full Name:</b> alpha-1-B glycoprotein	
<b>Immunogen Catalog Number:</b> EG1511	<b>Calculated MW:</b> 54kDa	
	<b>Observed MW:</b> 72 kDa	

## Applications

**Tested Applications:**  
WB, Cytometric bead array, Indirect ELISA, Sample test

**Species Specificity:**  
human

## Product Information

86112-1-PBS targets Alpha 1B-Glycoprotein as part of a matched antibody pair:

MP02261-1: 86112-2-PBS capture and 86112-1-PBS detection (validated in Cytometric bead array)

Unconjugated rabbit recombinant monoclonal antibody in PBS only (BSA and azide free) storage buffer at a concentration of 1 mg/mL, ready for conjugation. Created using Proteintech's proprietary in-house recombinant technology. Recombinant production enables unrivalled batch-to-batch consistency, easy scale-up, and future security of supply.

This conjugation ready format makes antibodies ideal for use in many applications including: ELISAs, multiplex assays requiring matched pairs, mass cytometry, and multiplex imaging applications. Antibody use should be optimized by the end user for each application and assay.

## Background Information

Alpha-1B-glycoprotein (A1BG) is a plasma protein and is a member of the immunoglobulin superfamily. A1BG contains 474 amino acids and has 5 intrachain disulfide bonds. It has been reported that cysteine-rich secretory protein 3 (CRISP-3) is a specific and high-affinity ligand of A1BG. A1BG-CRISP-3 complex displays a similar function in protecting the circulation from a potentially harmful effect of free CRISP3 (PMID: 15461460).

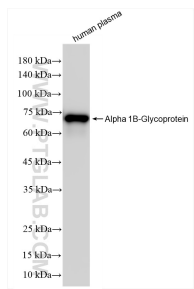
## Storage

**Storage:**  
Store at -80°C.  
**Storage Buffer:**  
PBS only, pH7.3

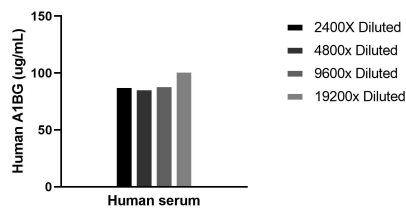
For technical support and original validation data for this product please contact:  
T: 1 (888) 4PTGLAB (1-888-478-4522) (toll free in USA), or 1(312) 455-8498 (outside USA)  
E: [proteintech@ptglab.com](mailto:proteintech@ptglab.com)  
W: [ptglab.com](http://ptglab.com)

This product is exclusively available under Proteintech Group brand and is not available to purchase from any other manufacturer.

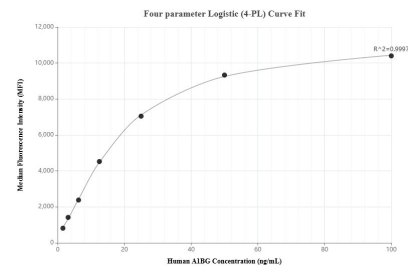
Selected Validation Data



human plasma were subjected to SDS PAGE followed by western blot with 86112-1-RR (A1BG antibody) at dilution of 1:10000 incubated at room temperature for 1.5 hours. This data was developed using the same antibody clone with 86112-1-PBS in a different storage buffer formulation.



The mean A1BG concentration was determined to be 91.4 ug/mL in human serum.



Cytometric bead array standard curve of MP02261-1, A1BG Recombinant Matched Antibody Pair, PBS Only. Capture antibody: 86112-2-PBS. Detection antibody: 86112-1-PBS. Standard: Eg1511. Range: 1.563-100 ng/mL