

For Research Use Only

# LPP Recombinant antibody, PBS Only

Catalog Number: 86117-3-PBS



## Basic Information

<b>Catalog Number:</b> 86117-3-PBS	<b>GenBank Accession Number:</b> BC130584	<b>Purification Method:</b> Protein A purification
<b>Size:</b> 100ug, Concentration: 1 mg/ml by Nanodrop;	<b>GeneID (NCBI):</b> 4026	<b>CloneNo.:</b> 250773C9
<b>Source:</b> Rabbit	<b>UNIPROT ID:</b> Q93052	
<b>Isotype:</b> IgG	<b>Full Name:</b> LIM domain containing preferred translocation partner in lipoma	
<b>Immunogen Catalog Number:</b> AG19205	<b>Calculated MW:</b> 612 aa, 66 kDa	
	<b>Observed MW:</b> 70-75 kDa	

## Applications

**Tested Applications:**  
WB, Indirect ELISA

**Species Specificity:**  
human, mouse, rat

## Background Information

LPP is a member of a subfamily of LIM domain proteins. Its characteristic is that the N-terminal region is rich in proline, and it has three C-terminal LIM domains. LPP localizes to the cell periphery in focal adhesions and may be involved in cell-cell adhesion and cell motility (PMID: 10637295). LPP is located at the junction of certain disease-related chromosomal translocations, which result in the expression of chimeric proteins that may promote tumor growth (PMID: 12581855).

## Storage

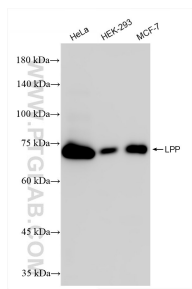
**Storage:**  
Store at -80°C.

**Storage Buffer:**  
PBS only, pH7.3

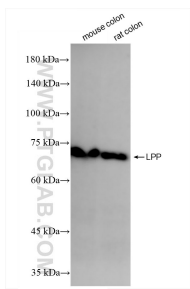
For technical support and original validation data for this product please contact:  
T: 1 (888) 4PTGLAB (1-888-478-4522) (toll free in USA), or 1(312) 455-8498 (outside USA)  
E: [proteintech@ptglab.com](mailto:proteintech@ptglab.com)  
W: [ptglab.com](http://ptglab.com)

This product is exclusively available under Proteintech Group brand and is not available to purchase from any other manufacturer.

## Selected Validation Data



Various lysates were subjected to SDS PAGE followed by western blot with 86117-3-RR (LPP antibody) at dilution of 1:10000 incubated at room temperature for 1.5 hours. This data was developed using the same antibody clone with 86117-3-PBS in a different storage buffer formulation.



Various lysates were subjected to SDS PAGE followed by western blot with 86117-3-RR (LPP antibody) at dilution of 1:10000 incubated at room temperature for 1.5 hours. This data was developed using the same antibody clone with 86117-3-PBS in a different storage buffer formulation.