

For Research Use Only

# LPP Recombinant antibody

Catalog Number: 86117-3-RR



## Basic Information

**Catalog Number:**

86117-3-RR

**Size:**

100ul , Concentration: 1000 µg/ml by Nanodrop;

**Source:**

Rabbit

**Isotype:**

IgG

**Immunogen Catalog Number:**

AG19205

**GenBank Accession Number:**

BC130584

**GeneID (NCBI):**

4026

**UNIPROT ID:**

Q93052

**Full Name:**

LIM domain containing preferred translocation partner in lipoma

**Calculated MW:**

612 aa, 66 kDa

**Observed MW:**

70-75 kDa

**Purification Method:**

Protein A purification

**CloneNo.:**

250773C9

**Recommended Dilutions:**

WB: 1:5000-1:50000

## Applications

**Tested Applications:**

WB, ELISA

**Species Specificity:**

human, mouse, rat

**Positive Controls:**

WB : HeLa cells, mouse colon tissue, HEK-293 cells, MCF-7 cells, rat colon tissue

## Background Information

LPP is a member of a subfamily of LIM domain proteins. Its characteristic is that the N-terminal region is rich in proline, and it has three C-terminal LIM domains. LPP localizes to the cell periphery in focal adhesions and may be involved in cell-cell adhesion and cell motility(PMID: 10637295). LPP is located at the junction of certain disease-related chromosomal translocations, which result in the expression of chimeric proteins that may promote tumor growth(PMID: 12581855).

## Storage

**Storage:**

Store at -20°C. Stable for one year after shipment.

**Storage Buffer:**

PBS with 0.02% sodium azide and 50% glycerol, pH7.3

Aliquoting is unnecessary for -20°C storage

\*\*\* 20ul sizes contain 0.1% BSA

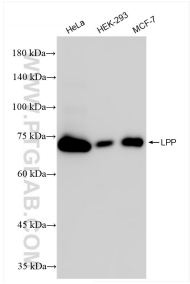
For technical support and original validation data for this product please contact:

T: 1 (888) 4PTGLAB (1-888-478-4522) (toll free in USA), or 1(312) 455-8498 (outside USA)

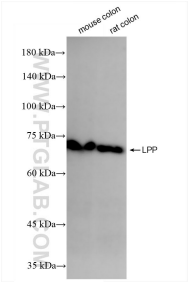
E: [proteintech@ptglab.com](mailto:proteintech@ptglab.com)  
W: [ptglab.com](http://ptglab.com)

This product is exclusively available under Proteintech Group brand and is not available to purchase from any other manufacturer.

Selected Validation Data



Various lysates were subjected to SDS PAGE followed by western blot with 86117-3-RR (LPP antibody) at dilution of 1:10000 incubated at room temperature for 1.5 hours.



Various lysates were subjected to SDS PAGE followed by western blot with 86117-3-RR (LPP antibody) at dilution of 1:10000 incubated at room temperature for 1.5 hours.