

For Research Use Only

CD8a Recombinant antibody

Catalog Number: 86119-1-RR



Basic Information

Catalog Number: 86119-1-RR	GenBank Accession Number: NM_031538.2	Purification Method: Protein A purification
Size: 100ul , Concentration: 1000 µg/ml by Nanodrop;	GeneID (NCBI): 24930	CloneNo.: 250721F4
Source: Rabbit	UNIPROT ID: P07725	Recommended Dilutions: WB: 1:2000-1:10000
Isotype: IgG	Full Name: CD8a molecule	
Immunogen Catalog Number: EG3839	Calculated MW: 26 kDa	
	Observed MW: 30 kDa	

Applications

Tested Applications: WB, ELISA	Positive Controls: WB : rat thymus tissue,
Species Specificity: rat	

Background Information

CD8 is a transmembrane glycoprotein composed of two disulfide-linked chains. It can be present as a homodimer of CD8α or as a heterodimer of CD8α and CD8β (PMID: 3264320; 8253791). CD8 is found on most thymocytes. The majority of class I-restricted T cells express mostly the CD8αβ heterodimer while CD8αα homodimers alone have been found on some gut intraepithelial T cells, on some T cell receptor (TCR) γδ T cells and on NK cells (PMID: 2111591; 1831127; 8420975). CD8 acts as a co-receptor that binds to MHC class-I and participates in cytotoxic T cell activation (PMID: 8499079). During T cell development, CD8 is required for positive selection of CD4-/CD8+ T cells (PMID: 1968084).

Storage

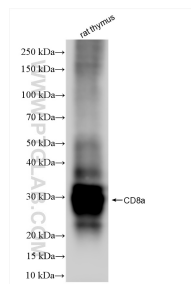
Storage:
Store at -20°C. Stable for one year after shipment.
Storage Buffer:
PBS with 0.02% sodium azide and 50% glycerol, pH7.3
Aliquoting is unnecessary for -20°C storage

*** 20ul sizes contain 0.1% BSA

For technical support and original validation data for this product please contact:
T: 1 (888) 4PTGLAB (1-888-478-4522) (toll free in USA), or 1(312) 455-8498 (outside USA)
E: proteintech@ptglab.com
W: ptglab.com

This product is exclusively available under Proteintech Group brand and is not available to purchase from any other manufacturer.

Selected Validation Data



Various lysates were subjected to SDS PAGE followed by western blot with 86119-1-RR (CD8a antibody) at dilution of 1:5000 incubated at room temperature for 1.5 hours.