

For Research Use Only

PRPF6 Recombinant antibody

Catalog Number: 86123-1-RR



Basic Information

| | | |
|----------------------------------------------------------------|--------------------------------------------------------------------------------|-------------------------------------------------------|
| Catalog Number: 86123-1-RR | GenBank Accession Number: BC001666 | Purification Method: Protein A purification |
| Size: 100ul , Concentration: 1000 µg/ml by Nanodrop; | GeneID (NCBI): 24148 | CloneNo.: 250706F2 |
| Source: Rabbit | UNIPROT ID: O94906 | Recommended Dilutions: WB: 1:1000-1:6000 |
| Isotype: IgG | Full Name: PRP6 pre-mRNA processing factor 6 homolog (S. cerevisiae) | |
| Immunogen Catalog Number: AG13817 | Calculated MW: 941 aa, 107 kDa | |
| | Observed MW: 100-108 kDa | |

Applications

| | |
|------------------------------------------|--------------------------------------------------------------------------|
| Tested Applications: WB, ELISA | Positive Controls: WB : HeLa cells, HEK-293 cells, U-251 cells |
| Species Specificity: human | |

Background Information

PRPF6 is involved in pre-mRNA splicing as component of the U4/U6-U5 tri-snRNP complex, it can enhance dihydrotestosterone-induced transactivation activity of AR, as well as dexamethasone-induced transactivation activity of NR3C1, but does not affect estrogen-induced transactivation.

Storage

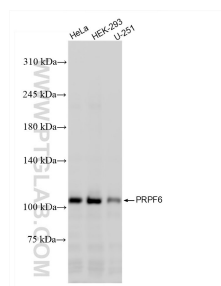
Storage:
Store at -20°C. Stable for one year after shipment.
Storage Buffer:
PBS with 0.02% sodium azide and 50% glycerol, pH7.3
Aliquoting is unnecessary for -20°C storage

*** 20ul sizes contain 0.1% BSA

For technical support and original validation data for this product please contact:
T: 1 (888) 4PTGLAB (1-888-478-4522) (toll free in USA), or 1(312) 455-8498 (outside USA)
E: proteintech@ptglab.com
W: ptglab.com

This product is exclusively available under Proteintech Group brand and is not available to purchase from any other manufacturer.

Selected Validation Data



Various lysates were subjected to SDS PAGE followed by western blot with 86123-1-RR (PRPF6 antibody) at dilution of 1:3000 incubated at room temperature for 1.5 hours.