

For Research Use Only

NRP2 Recombinant antibody, PBS Only (Capture)

Catalog Number: 86126-2-PBS



Basic Information

Catalog Number: 86126-2-PBS	GenBank Accession Number: NM_201266.1	Purification Method: Protein A purification
Size: 100ug , Concentration: 1 mg/ml by Nanodrop;	GeneID (NCBI): 8828	CloneNo.: 250688B8
Source: Rabbit	UNIPROT ID: O60462-1	
Isotype: IgG	Full Name: neuropilin 2	
Immunogen Catalog Number: EG3125	Calculated MW: 105 kDa	

Applications

Tested Applications:
Cytometric bead array, Sandwich ELISA, Indirect ELISA, Sample test

Species Specificity:
human

Product Information

86126-2-PBS targets NRP2 as part of a matched antibody pair:

MP02281-1: 86126-2-PBS capture and 86126-1-PBS detection (validated in Cytometric bead array)

MP02281-2: 86126-2-PBS capture and 86126-3-PBS detection (validated in Sandwich ELISA)

Unconjugated rabbit recombinant monoclonal antibody in PBS only (BSA and azide free) storage buffer at a concentration of 1 mg/mL, ready for conjugation. Created using Proteintech's proprietary in-house recombinant technology. Recombinant production enables unrivalled batch-to-batch consistency, easy scale-up, and future security of supply.

This conjugation ready format makes antibodies ideal for use in many applications including: ELISAs, multiplex assays requiring matched pairs, mass cytometry, and multiplex imaging applications. Antibody use should be optimized by the end user for each application and assay.

Storage

Storage:
Store at -80°C.
Storage Buffer:
PBS only, pH7.3

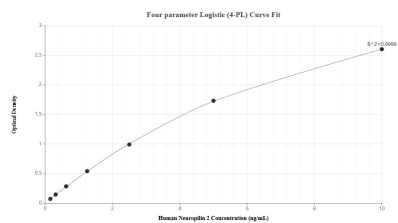
For technical support and original validation data for this product please contact:

T: 1 (888) 4PTGLAB (1-888-478-4522) (toll free in USA), or 1(312) 455-8498 (outside USA)

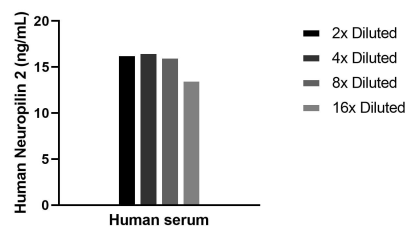
E: proteintech@ptglab.com
W: ptglab.com

This product is exclusively available under Proteintech Group brand and is not available to purchase from any other manufacturer.

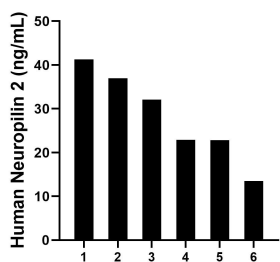
Selected Validation Data



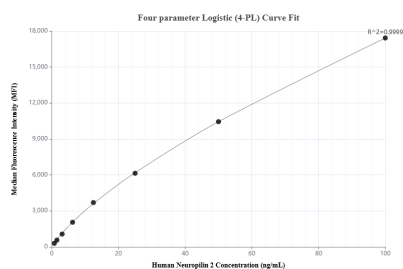
Sandwich ELISA standard curve of MP02281-2, Human Neuropilin 2 Recombinant Matched Antibody Pair - PBS only. 86126-2-PBS was coated to a plate as the capture antibody and incubated with serial dilutions of standard Eg3125. 86126-3-PBS was HRP conjugated as the detection antibody. Range: 0.156-10 ng/mL



The mean Neuropilin 2 concentration was determined to be 15.7 ng/mL in human serum.



Serum of six individual healthy human donors was measured. The human Neuropilin 2 concentration of detected samples was determined to be 28.25 ng/mL with a range of 13.50 - 41.26 ng/mL.



Cytometric bead array standard curve of MP02281-1, Neuropilin 2 Recombinant Matched Antibody Pair, PBS Only. Capture antibody: 86126-2-PBS. Detection antibody: 86126-1-PBS. Standard: Eg3125. Range: 0.781-100 ng/mL