

For Research Use Only

# Mouse CD22 Recombinant antibody, PBS Only

Catalog Number: 86128-2-PBS



## Basic Information

<b>Catalog Number:</b> 86128-2-PBS	<b>GenBank Accession Number:</b> NM_001043317.2	<b>Purification Method:</b> Protein A purification
<b>Size:</b> 100ug , Concentration: 1 mg/ml by Nanodrop;	<b>GeneID (NCBI):</b> 12483	<b>CloneNo.:</b> 250078E8
<b>Source:</b> Rabbit	<b>UNIPROT ID:</b> P35329-1	
<b>Isotype:</b> IgG	<b>Full Name:</b> CD22 antigen	
<b>Immunogen Catalog Number:</b> EG1324	<b>Calculated MW:</b> 97kDa	

## Applications

**Tested Applications:**  
IF/ICC, Indirect ELISA

**Species Specificity:**  
mouse

## Background Information

CD22, also known as Siglec-2 (sialic acid binding Ig-like lectin 2) or BL-CAM (B-lymphocyte cell adhesion molecule), is a 130-140 kDa, B-cell restricted, type I transmembrane glycoprotein belonging to the immunoglobulin gene superfamily. The expression of CD22 is developmentally regulated. It is expressed at low levels in the cytoplasm of pro-B and pre-B cells and present on the cell surface only at mature stages of B-cell differentiation. Cell surface expression is lost during terminal differentiation into plasma cell and after B-cell activation. CD22 is an inhibitory receptor for B-cell receptor (BCR) signalling, preferentially binds to alpha-2,6-linked sialic acid and mediates B-cell B-cell interactions. It plays a crucial role in activation and differentiation of the B-cell.

## Storage

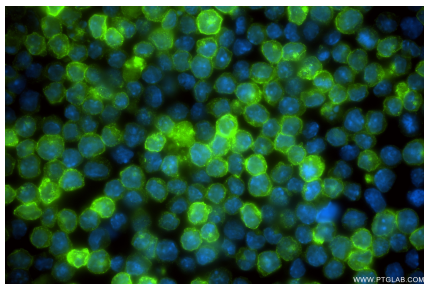
**Storage:**  
Store at -80°C.

**Storage Buffer:**  
PBS only, pH7.3

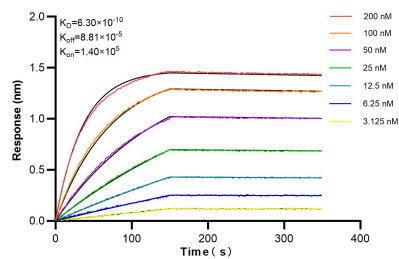
For technical support and original validation data for this product please contact:  
T: 1 (888) 4PTGLAB (1-888-478-4522) (toll free in USA), or 1(312) 455-8498 (outside USA)  
E: [proteintech@ptglab.com](mailto:proteintech@ptglab.com)  
W: [ptglab.com](http://ptglab.com)

This product is exclusively available under Proteintech Group brand and is not available to purchase from any other manufacturer.

## Selected Validation Data



Immunofluorescent analysis of (4% PFA) fixed A20 cells using CD22 antibody (86128-2-RR, Clone: 250078E8) at dilution of 1:200 and CoraLite® 488-Conjugated Goat Anti-Rabbit IgG(H+L) (SA00013-2). This data was developed using the same antibody clone with 86128-2-PBS in a different storage buffer formulation.



Biolayer interferometry (BLI) kinetic assays of 86128-2-RR against Human CD22 were performed. The affinity constant is 0.63 nM.