

For Research Use Only

CD22 Recombinant antibody

Catalog Number: 86128-2-RR



Basic Information

Catalog Number: 86128-2-RR	GenBank Accession Number: NM_001043317.2	Purification Method: Protein A purification
Size: 100ul , Concentration: 1000 µg/ml by Nanodrop;	GeneID (NCBI): 12483	CloneNo.: 250078E8
Source: Rabbit	UNIPROT ID: P35329-1	Recommended Dilutions: IF/ICC: 1:50-1:500
Isotype: IgG	Full Name: CD22 antigen	
Immunogen Catalog Number: EG1324	Calculated MW: 97kDa	

Applications

Tested Applications: IF/ICC, ELISA	Positive Controls: IF/ICC : A20 cells,
Species Specificity: mouse	

Background Information

CD22, also known as Siglec-2 (sialic acid binding Ig-like lectin 2) or BL-CAM (B-lymphocyte cell adhesion molecule), is a 130-140 kDa, B-cell restricted, type I transmembrane glycoprotein belonging to the immunoglobulin gene superfamily. The expression of CD22 is developmentally regulated. It is expressed at low levels in the cytoplasm of pro-B and pre-B cells and present on the cell surface only at mature stages of B-cell differentiation. Cell surface expression is lost during terminal differentiation into plasma cell and after B-cell activation. CD22 is an inhibitory receptor for B-cell receptor (BCR) signalling, preferentially binds to alpha-2,6-linked sialic acid and mediates B-cell B-cell interactions. It plays a crucial role in activation and differentiation of the B-cell.

Storage

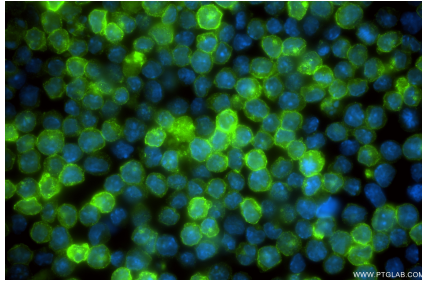
Storage:
Store at -20°C. Stable for one year after shipment.
Storage Buffer:
PBS with 0.02% sodium azide and 50% glycerol, pH7.3
Aliquoting is unnecessary for -20°C storage

*** 20ul sizes contain 0.1% BSA

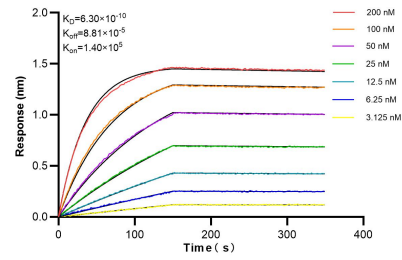
For technical support and original validation data for this product please contact:
T: 1 (888) 4PTGLAB (1-888-478-4522) (toll free in USA), or 1(312) 455-8498 (outside USA)
E: proteintech@ptglab.com
W: ptglab.com

This product is exclusively available under Proteintech Group brand and is not available to purchase from any other manufacturer.

Selected Validation Data



Immunofluorescent analysis of (4% PFA) fixed A20 cells using CD22 antibody (86128-2-RR, Clone: 250078E8) at dilution of 1:200 and CoraLite® 488-Conjugated Goat Anti-Rabbit IgG(H+L) (SA00013-2).



Biolayer interferometry (BLI) kinetic assays of 86128-2-RR against Human CD22 were performed. The affinity constant is 0.63 nM.