

For Research Use Only

ADSL Recombinant antibody

Catalog Number: 86131-2-RR



Basic Information

Catalog Number:

86131-2-RR

Size:

100ul , Concentration: 1000 µg/ml by Nanodrop;

Source:

Rabbit

Isotype:

IgG

Immunogen Catalog Number:

AG7332

GenBank Accession Number:

BC000253

GeneID (NCBI):

158

UNIPROT ID:

P30566

Full Name:

adenylosuccinate lyase

Calculated MW:

55 kDa

Observed MW:

55 kDa

Purification Method:

Protein A purification

CloneNo.:

250216H4

Recommended Dilutions:

WB: 1:2000-1:10000

Applications

Tested Applications:

WB, ELISA

Species Specificity:

human, mouse, rat

Positive Controls:

WB : HeLa cells, HepG2 cells, Jurkat cells, HL-60 cells, Ramos cells, NIH/3T3 cells, C6 cells

Background Information

ADSL(adenylosuccinate lyase) is also named as AMPS, ASase, ASL and belongs to the lyase 1 family. It is an enzyme involved in 2 pathways of purine nucleotide metabolism and catalyzes cleavage of succinyl groups to yield fumarate(PMID:18524658). Defects in ADSL are the cause of adenylosuccinase deficiency (ADSL deficiency). In humans, mutations in ADSL lead to an inborn error of metabolism originally characterized by developmental delay, often with autistic features(PMID:20884265)..The ADSL enzymatic activity is reduced in lymphocytes and red blood cells of the patient with severe psychomotor retardation(PMID:9545543). It has 2 isoforms produced by alternative splicing.

Storage

Storage:

Store at -20°C. Stable for one year after shipment.

Storage Buffer:

PBS with 0.02% sodium azide and 50% glycerol, pH7.3

Aliquoting is unnecessary for -20°C storage

*** 20ul sizes contain 0.1% BSA

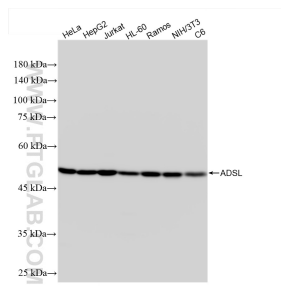
For technical support and original validation data for this product please contact:

T: 1 (888) 4PTGLAB (1-888-478-4522) (toll free in USA), or 1(312) 455-8498 (outside USA)

E: proteintech@ptglab.com
W: ptglab.com

This product is exclusively available under Proteintech Group brand and is not available to purchase from any other manufacturer.

Selected Validation Data



Various lysates were subjected to SDS PAGE followed by western blot with 86131-2-RR (ADSL antibody) at dilution of 1:5000 incubated at room temperature for 1.5 hours.