

For Research Use Only

Collagen Type II Recombinant antibody, PBS Only

Catalog Number: 86139-2-PBS



Basic Information

Catalog Number: 86139-2-PBS	GenBank Accession Number: BC007252	Purification Method: Protein A purification
Size: 100ug , Concentration: 1 mg/ml by Nanodrop;	GeneID (NCBI): 1280	CloneNo.: 250506B7
Source: Rabbit	UNIPROT ID: P02458	
Isotype: IgG	Full Name: collagen, type II, alpha 1	
Immunogen Catalog Number: AG29265	Calculated MW: 134 kDa	
	Observed MW: 200 kDa	

Applications

Tested Applications:
WB, Indirect ELISA

Species Specificity:
human

Background Information

The COL2A1 gene encodes the alpha-1 chain of type II collagen, a fibrillar collagen found primarily in cartilage and the vitreous humor of the eye. Type II collagen is essential for the formation of the extracellular matrix in cartilage and other connective tissues, providing structure and strength to these tissues.

Storage

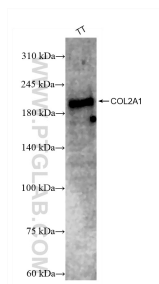
Storage:
Store at -80°C.

Storage Buffer:
PBS only, pH7.3

For technical support and original validation data for this product please contact:
T: 1 (888) 4PTGLAB (1-888-478-4522) (toll free in USA), or 1(312) 455-8498 (outside USA)
E: proteintech@ptglab.com
W: ptglab.com

This product is exclusively available under Proteintech Group brand and is not available to purchase from any other manufacturer.

Selected Validation Data



TT cells were subjected to SDS PAGE followed by western blot with 86139-2-RR (COL2A1 antibody) at dilution of 1:5000 incubated at room temperature for 1.5 hours. This data was developed using the same antibody clone with 86139-2-PBS in a different storage buffer formulation.