

For Research Use Only

# REL Recombinant antibody, PBS Only

Catalog Number: 86140-1-PBS



## Basic Information

Catalog Number:

86140-1-PBS

Size:

100ug, Concentration: 1 mg/ml by Nanodrop;

Source:

Rabbit

Isotype:

IgG

Immunogen Catalog Number:

AG26803

GenBank Accession Number:

NM\_001291746

GeneID (NCBI):

5966

UNIPROT ID:

Q04864

Full Name:

v-rel reticuloendotheliosis viral oncogene homolog (avian)

Calculated MW:

69 kDa

Observed MW:

68-78 kDa

Purification Method:

Protein A purification

CloneNo.:

250180A1

## Applications

Tested Applications:

WB, Indirect ELISA

Species Specificity:

human

## Background Information

REL, also known as, Proto-oncogene c-Rel, is a 619 amino acid protein, which may play a role in differentiation and lymphopoiesis. NF-kappa-B is a homo- or heterodimeric complex formed by the Rel-like domain-containing proteins RELA/p65, RELB, NFKB1/p105, NFKB1/p50, REL and NFKB2/p52. The NF-kappa-B heterodimer RELA/p65-c-Rel is a transcriptional activator.

## Storage

Storage:

Store at -80°C.

Storage Buffer:

PBS only, pH7.3

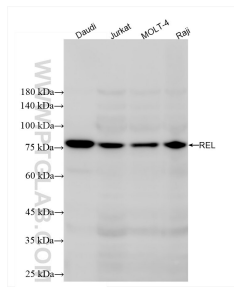
For technical support and original validation data for this product please contact:

T: 1 (888) 4PTGLAB (1-888-478-4522) (toll free in USA), or 1(312) 455-8498 (outside USA)

E: [proteintech@ptglab.com](mailto:proteintech@ptglab.com)  
W: [ptglab.com](http://ptglab.com)

This product is exclusively available under Proteintech Group brand and is not available to purchase from any other manufacturer.

## Selected Validation Data



Daudi cells were subjected to SDS PAGE followed by western blot with 86140-1-RR (REL antibody) at dilution of 1:3000 incubated at room temperature for 1.5 hours. This data was developed using the same antibody clone with 86140-1-PBS in a different storage buffer formulation.