

For Research Use Only

REL Recombinant antibody

Catalog Number: 86140-1-RR



Basic Information

Catalog Number: 86140-1-RR	GenBank Accession Number: NM_001291746	Purification Method: Protein A purification
Size: 100ul , Concentration: 1000 µg/ml by Nanodrop;	GeneID (NCBI): 5966	CloneNo.: 250180A1
Source: Rabbit	UNIPROT ID: Q04864	Recommended Dilutions: WB: 1:1000-1:6000
Isotype: IgG	Full Name: v-rel reticuloendotheliosis viral oncogene homolog (avian)	
Immunogen Catalog Number: AG26803	Calculated MW: 69 kDa	
	Observed MW: 68-78 kDa	

Applications

Tested Applications: WB, ELISA	Positive Controls: WB : Daudi cells, Jurkat cells, MOLT-4 cells, Raji cells
Species Specificity: human	

Background Information

REL, also known as, Proto-oncogene c-Rel, is a 619 amino acid protein, which may play a role in differentiation and lymphopoiesis. NF-kappa-B is a homo- or heterodimeric complex formed by the Rel-like domain-containing proteins RELA/p65, RELB, NFKB1/p105, NFKB1/p50, REL and NFKB2/p52. The NF-kappa-B heterodimer RELA/p65-c-Rel is a transcriptional activator.

Storage

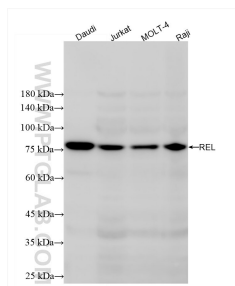
Storage:
Store at -20°C. Stable for one year after shipment.
Storage Buffer:
PBS with 0.02% sodium azide and 50% glycerol, pH7.3
Aliquoting is unnecessary for -20°C storage

*** 20ul sizes contain 0.1% BSA

For technical support and original validation data for this product please contact:
T: 1 (888) 4PTGLAB (1-888-478-4522) (toll free in USA), or 1(312) 455-8498 (outside USA)
E: proteintech@ptglab.com
W: ptglab.com

This product is exclusively available under Proteintech Group brand and is not available to purchase from any other manufacturer.

Selected Validation Data



Daudi cells were subjected to SDS PAGE followed by western blot with 86140-1-RR (REL antibody) at dilution of 1:3000 incubated at room temperature for 1.5 hours.