

For Research Use Only

# ILT-3/LILRB4 Recombinant antibody, PBS Only

Catalog Number: 86142-1-PBS



## Basic Information

<b>Catalog Number:</b> 86142-1-PBS	<b>GenBank Accession Number:</b> AAH26309.1	<b>Purification Method:</b> Protein A purification
<b>Size:</b> 100ug , Concentration: 1 mg/ml by Nanodrop;	<b>GeneID (NCBI):</b> 11006	<b>CloneNo.:</b> 250356F3
<b>Source:</b> Rabbit	<b>UNIPROT ID:</b> Q8NHJ6	
<b>Isotype:</b> IgG	<b>Full Name:</b> leukocyte immunoglobulin-like receptor, subfamily B (with TM and ITIM domains), member 4	
<b>Immunogen Catalog Number:</b> EG1743	<b>Calculated MW:</b> 49kDa	
	<b>Observed MW:</b> 49 kDa	

## Applications

**Tested Applications:**  
WB, Indirect ELISA

**Species Specificity:**  
human, mouse

## Background Information

LILRB4 is an inhibitory receptor in the LILR family mainly expressed on normal and malignant human cells of myeloid origin. LILRB4 is activated and subsequently recruits adaptors to cytoplasmic immunoreceptor tyrosine inhibitory motifs to initiate different signaling cascades, thus playing an important role in physiological and pathological conditions, including autoimmune diseases, microbial infections, and cancers.

## Storage

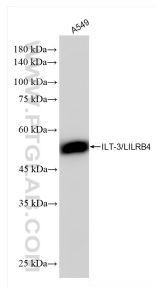
**Storage:**  
Store at -80°C.

**Storage Buffer:**  
PBS only, pH7.3

For technical support and original validation data for this product please contact:  
T: 1 (888) 4PTGLAB (1-888-478-4522) (toll free in USA), or 1(312) 455-8498 (outside USA)  
E: [proteintech@ptglab.com](mailto:proteintech@ptglab.com)  
W: [ptglab.com](http://ptglab.com)

This product is exclusively available under Proteintech Group brand and is not available to purchase from any other manufacturer.

## Selected Validation Data



A549 cells were subjected to SDS PAGE followed by western blot with 86142-1-RR (ILT-3/LILRB4 antibody) at dilution of 1:5000 incubated at room temperature for 1.5 hours. This data was developed using the same antibody clone with 86142-1-PBS in a different storage buffer formulation.