

For Research Use Only

# Mouse Klk1 Recombinant monoclonal antibody, PBS Only

Catalog Number: 86143-1-PBS



## Basic Information

Catalog Number:

86143-1-PBS

Size:

100ug, Concentration: 1 mg/ml by Nanodrop;

Source:

Rabbit

Isotype:

IgG

Immunogen Catalog Number:

EG2996

GenBank Accession Number:

NM\_001320331.1

GeneID (NCBI):

16612

UNIPROT ID:

P15947

Full Name:

kallikrein 1

Calculated MW:

29 kDa

Observed MW:

28-34 kDa

Purification Method:

Protein A purification

CloneNo.:

250034D2

## Applications

Tested Applications:

WB, IHC, IF-P, Indirect ELISA

Species Specificity:

mouse

## Background Information

Mouse KLK1 (Kallikrein-Related Peptidase 1) is a serine protease belonging to the kallikrein family with important physiological functions. KLK1 can cleave the Met-Lys and Arg-Ser bonds in kininogen to release Lys-bradykinin. Bradykinin plays an important role in regulating vasodilation, lowering blood pressure, smooth muscle relaxation and contraction, pain induction and inflammatory response.

## Storage

Storage:

Store at -80°C.

Storage Buffer:

PBS only, pH7.3

For technical support and original validation data for this product please contact:

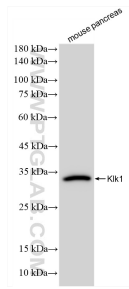
T: 1 (888) 4PTGLAB (1-888-478-4522) (toll free in USA), or 1(312) 455-8498 (outside USA)

E: [proteintech@ptglab.com](mailto:proteintech@ptglab.com)

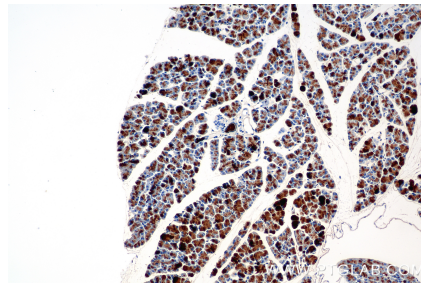
W: [ptglab.com](http://ptglab.com)

This product is exclusively available under Proteintech Group brand and is not available to purchase from any other manufacturer.

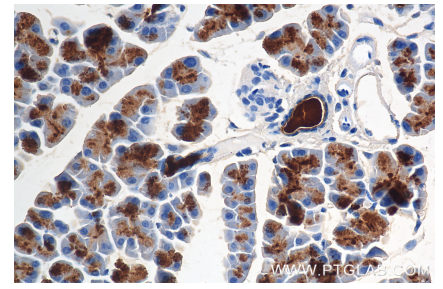
## Selected Validation Data



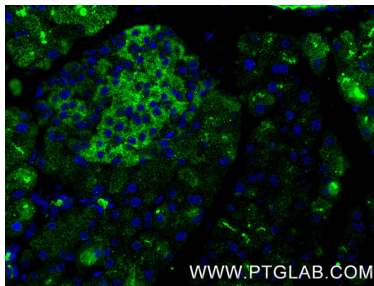
mouse pancreas tissue were subjected to SDS PAGE followed by western blot with 86143-1-RR (Klk1 antibody) at dilution of 1:5000 incubated at room temperature for 1.5 hours. This data was developed using the same antibody clone with 86143-1-PBS in a different storage buffer formulation.



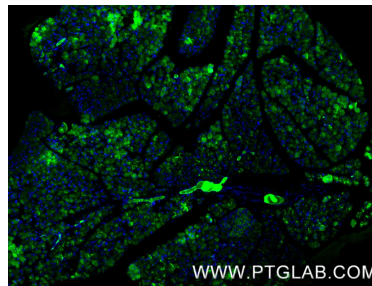
Immunohistochemical analysis of paraffin-embedded mouse pancreas tissue slide using 86143-1-RR (Klk1 antibody) at dilution of 1:1000 (under 10x lens). Heat mediated antigen retrieval with Tris-EDTA buffer (pH 9.0). This data was developed using the same antibody clone with 86143-1-PBS in a different storage buffer formulation.



Immunohistochemical analysis of paraffin-embedded mouse pancreas tissue slide using 86143-1-RR (Klk1 antibody) at dilution of 1:1000 (under 40x lens). Heat mediated antigen retrieval with Tris-EDTA buffer (pH 9.0). This data was developed using the same antibody clone with 86143-1-PBS in a different storage buffer formulation.



Immunofluorescent analysis of (4% PFA) fixed paraffin-embedded mouse pancreas tissue using Klk1 antibody (86143-1-RR, Clone: 250034D2) at dilution of 1:200 and CoraLite® 488-Conjugated Goat Anti-Rabbit IgG(H+L) (SA00013-2). Heat mediated antigen retrieval with Tris-EDTA buffer (pH 9.0). This data was developed using the same antibody clone with 86143-1-PBS in a different storage buffer formulation.



Immunofluorescent analysis of (4% PFA) fixed paraffin-embedded mouse pancreas tissue using Klk1 antibody (86143-1-RR, Clone: 250034D2) at dilution of 1:200 and CoraLite® 488-Conjugated Goat Anti-Rabbit IgG(H+L) (SA00013-2). Heat mediated antigen retrieval with Tris-EDTA buffer (pH 9.0). This data was developed using the same antibody clone with 86143-1-PBS in a different storage buffer formulation.