

For Research Use Only

ERCC6 Recombinant antibody

Catalog Number: 86144-1-RR



Basic Information

Catalog Number: 86144-1-RR	GenBank Accession Number: BC127104	Purification Method: Protein A purification
Size: 100ul , Concentration: 1000 µg/ml by Nanodrop;	GeneID (NCBI): 2074	CloneNo.: 250645D4
Source: Rabbit	UNIPROT ID: PODP91	Recommended Dilutions: WB: 1:500-1:2000
Isotype: IgG	Full Name: excision repair cross-complementing rodent repair deficiency, complementation group 6	
Immunogen Catalog Number: AG18009	Calculated MW: 1493 aa, 168 kDa	
	Observed MW: 180 kDa	

Applications

Tested Applications: WB, ELISA	Positive Controls: WB : HeLa cells,
Species Specificity: human	

Background Information

ERCC6, also named as CSB, belongs to the SNF2/RAD54 helicase family. It is involved in the preferential repair of active genes. It is presumed DNA or RNA unwinding function. ERCC6 corrects the UV survival and RNA synthesis after UV exposure of Cockayne syndrome complementation group B. Defects in ERCC6 are the cause of Cockayne syndrome type B (CSB), cerebro-oculo-facio-skeletal syndrome type 1 (COFS1), De Sanctis-Cacchione syndrome (DSC), and UV-sensitive syndrome (UVS). Genetic variation in ERCC6 is associated with susceptibility to age-related macular degeneration type 5 (ARMD5). The antibody is specific to ERCC6.

Storage

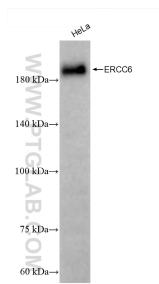
Storage:
Store at -20°C. Stable for one year after shipment.
Storage Buffer:
PBS with 0.02% sodium azide and 50% glycerol, pH7.3
Aliquoting is unnecessary for -20°C storage

*** 20ul sizes contain 0.1% BSA

For technical support and original validation data for this product please contact:
T: 1 (888) 4PTGLAB (1-888-478-4522) (toll free in USA), or 1(312) 455-8498 (outside USA)
E: proteintech@ptglab.com
W: ptglab.com

This product is exclusively available under Proteintech Group brand and is not available to purchase from any other manufacturer.

Selected Validation Data



HeLa cells were subjected to SDS PAGE followed by western blot with 86144-1-RR (ERCC6 antibody) at dilution of 1:1000 incubated at room temperature for 1.5 hours.