

For Research Use Only

KLK9 Recombinant antibody, PBS Only

Catalog Number: 86149-1-PBS



Basic Information

Catalog Number: 86149-1-PBS	GenBank Accession Number: NM_012315.1	Purification Method: Protein A purification
Size: 100ug, Concentration: 1 mg/ml by Nanodrop;	GeneID (NCBI): 284366	CloneNo.: 250489A5
Source: Rabbit	UNIPROT ID: Q9UKQ9-1	
Isotype: IgG	Full Name: kallikrein-related peptidase 9	
Immunogen Catalog Number: EG2779	Calculated MW: 28 kDa	
	Observed MW: 22-25 kDa	

Applications

Tested Applications:
WB, Indirect ELISA
Species Specificity:
human, mouse

Background Information

KLK9 (Kallikrein-Related Peptidase 9) is a serine protease belonging to the kallikrein subfamily, which may be involved in a variety of physiological processes, such as inflammatory response, cell proliferation and tissue repair.

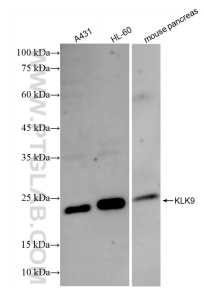
Storage

Storage:
Store at -80°C.
Storage Buffer:
PBS only, pH7.3

For technical support and original validation data for this product please contact:
T: 1 (888) 4PTGLAB (1-888-478-4522) (toll free in USA), or 1(312) 455-8498 (outside USA)
E: proteintech@ptglab.com
W: ptglab.com

This product is exclusively available under Proteintech Group brand and is not available to purchase from any other manufacturer.

Selected Validation Data



Various lysates were subjected to SDS PAGE followed by western blot with 86149-1-RR (KLK9 antibody) at dilution of 1:5000 incubated at room temperature for 1.5 hours. This data was developed using the same antibody clone with 86149-1-PBS in a different storage buffer formulation.