

For Research Use Only

KLK9 Recombinant antibody

Catalog Number: 86149-1-RR



Basic Information

Catalog Number: 86149-1-RR	GenBank Accession Number: NM_012315.1	Purification Method: Protein A purification
Size: 100ul , Concentration: 1000 µg/ml by Nanodrop;	GeneID (NCBI): 284366	CloneNo.: 250489A5
Source: Rabbit	UNIPROT ID: Q9UKQ9-1	Recommended Dilutions: WB: 1:2000-1:10000
Isotype: IgG	Full Name: kallikrein-related peptidase 9	
Immunogen Catalog Number: EG2779	Calculated MW: 28 kDa	
	Observed MW: 22-25 kDa	

Applications

Tested Applications: WB, ELISA	Positive Controls: WB : A431 cells, HL-60 cells, mouse pancreas tissue
Species Specificity: human, mouse	

Background Information

KLK9 (Kallikrein-Related Peptidase 9) is a serine protease belonging to the kallikrein subfamily, which may be involved in a variety of physiological processes, such as inflammatory response, cell proliferation and tissue repair.

Storage

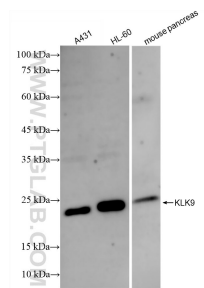
Storage:
Store at -20°C. Stable for one year after shipment.
Storage Buffer:
PBS with 0.02% sodium azide and 50% glycerol, pH7.3
Aliquoting is unnecessary for -20°C storage

*** 20ul sizes contain 0.1% BSA

For technical support and original validation data for this product please contact:
T: 1 (888) 4PTGLAB (1-888-478-4522) (toll free in USA), or 1(312) 455-8498 (outside USA)
E: proteintech@ptglab.com
W: ptglab.com

This product is exclusively available under Proteintech Group brand and is not available to purchase from any other manufacturer.

Selected Validation Data



Various lysates were subjected to SDS PAGE followed by western blot with 86149-1-RR (KLK9 antibody) at dilution of 1:5000 incubated at room temperature for 1.5 hours.