

For Research Use Only

GCDFP-15/PIP Recombinant antibody, PBS Only (Capture/Detector)

Catalog Number: 86152-1-PBS



Basic Information

Catalog Number: 86152-1-PBS	GenBank Accession Number: NM_002652.3	Purification Method: Protein A purification
Size: 100ug , Concentration: 1 mg/ml by Nanodrop;	GeneID (NCBI): 5304	CloneNo.: 250676D4
Source: Rabbit	UNIPROT ID: P12273	
Isotype: IgG	Full Name: prolactin-induced protein	
Immunogen Catalog Number: EG3018	Calculated MW: 17 kDa	

Applications

Tested Applications:
Cytometric bead array, Sandwich ELISA, Indirect ELISA, Sample test

Species Specificity:
human

Product Information

86152-1-PBS targets GCDFP-15/PIP as part of a matched antibody pair:

MP02262-1: 86152-2-PBS capture and 86152-1-PBS detection (validated in Cytometric bead array)

MP02262-2: 86152-1-PBS capture and 86152-3-PBS detection (validated in Sandwich ELISA)

Unconjugated rabbit recombinant monoclonal antibody in PBS only (BSA and azide free) storage buffer at a concentration of 1 mg/mL, ready for conjugation. Created using Proteintech's proprietary in-house recombinant technology. Recombinant production enables unrivalled batch-to-batch consistency, easy scale-up, and future security of supply.

This conjugation ready format makes antibodies ideal for use in many applications including: ELISAs, multiplex assays requiring matched pairs, mass cytometry, and multiplex imaging applications. Antibody use should be optimized by the end user for each application and assay.

Storage

Storage:
Store at -80°C.
Storage Buffer:
PBS only, pH7.3

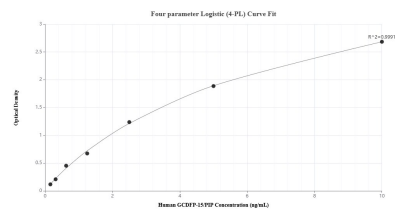
For technical support and original validation data for this product please contact:

T: 1 (888) 4PTGLAB (1-888-478-4522) (toll free in USA), or 1(312) 455-8498 (outside USA)

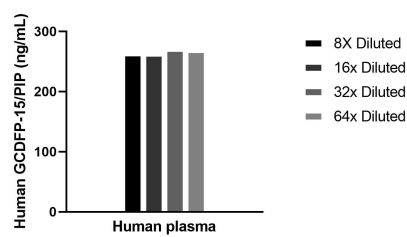
E: proteintech@ptglab.com
W: ptglab.com

This product is exclusively available under Proteintech Group brand and is not available to purchase from any other manufacturer.

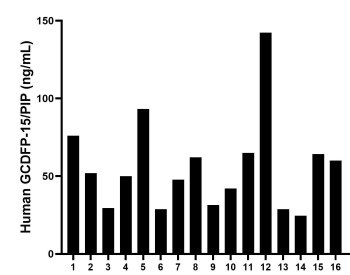
Selected Validation Data



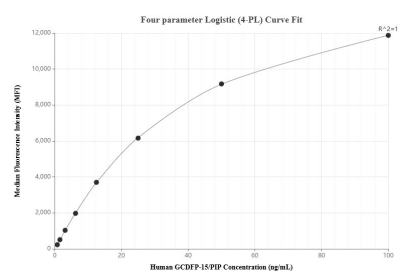
Sandwich ELISA standard curve of MP02262-2, Human GCDFP-15/PIP Recombinant Matched Antibody Pair - PBS only. 86152-1-PBS was coated to a plate as the capture antibody and incubated with serial dilutions of standard Eg3018. 86152-3-PBS was HRP conjugated as the detection antibody. Range: 0.156-10 ng/mL



The mean GCDFP-15/PIP concentration was determined to be 267.1 ng/mL in human serum.



Serum of six individual healthy human donors was measured. The human TNFR1/CD120a concentration of detected samples was determined to be 56.11 ng/mL with a range of 24.53 - 142.30 ng/mL.



Cytometric bead array standard curve of MP02262-1, GCDFP-15/PIP Recombinant Matched Antibody Pair, PBS Only. Capture antibody: 86152-2-PBS. Detection antibody: 86152-1-PBS. Standard: Eg3018. Range: 0.781-100 ng/mL