

For Research Use Only

TACSTD2 Recombinant antibody, PBS Only (Detector)

Catalog Number: 86155-2-PBS



Basic Information

Catalog Number: 86155-2-PBS	GenBank Accession Number: BC009409	Purification Method: Protein A purification
Size: 100ug , Concentration: 1 mg/ml by Nanodrop;	GeneID (NCBI): 4070	CloneNo.: 250382C2
Source: Rabbit	UNIPROT ID: P09758	
Isotype: IgG	Full Name: tumor-associated calcium signal transducer 2	
Immunogen Catalog Number: EG3329	Calculated MW: 36 kDa	

Applications

Tested Applications:
Sandwich ELISA, Indirect ELISA, Sample test

Species Specificity:
human

Product Information

86155-2-PBS targets TACSTD2 as part of a matched antibody pair:

MP02271-1: 86155-3-PBS capture and 86155-2-PBS detection (validated in Sandwich ELISA)

Unconjugated rabbit recombinant monoclonal antibody in PBS only (BSA and azide free) storage buffer at a concentration of 1 mg/mL, ready for conjugation. Created using Proteintech's proprietary in-house recombinant technology. Recombinant production enables unrivalled batch-to-batch consistency, easy scale-up, and future security of supply.

This conjugation ready format makes antibodies ideal for use in many applications including: ELISAs, multiplex assays requiring matched pairs, mass cytometry, and multiplex imaging applications. Antibody use should be optimized by the end user for each application and assay.

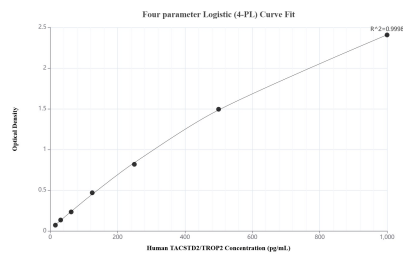
Storage

Storage:
Store at -80°C.
Storage Buffer:
PBS only, pH7.3

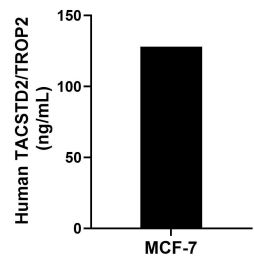
For technical support and original validation data for this product please contact:
T: 1 (888) 4PTGLAB (1-888-478-4522) (toll free in USA), or 1(312) 455-8498 (outside USA)
E: proteintech@ptglab.com
W: ptglab.com

This product is exclusively available under Proteintech Group brand and is not available to purchase from any other manufacturer.

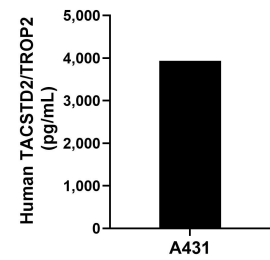
Selected Validation Data



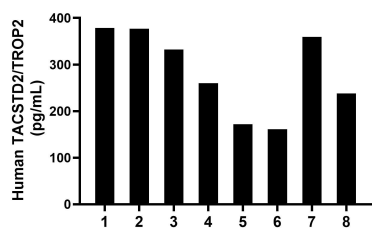
Sandwich ELISA standard curve of MP02271-1, Human TACSTD2/TROP2 Recombinant Matched Antibody Pair - PBS only. 86155-3-PBS was coated to a plate as the capture antibody and incubated with serial dilutions of standard Eg3329. 86155-2-PBS was HRP conjugated as the detection antibody. Range: 15.6-1000 pg/mL



The mean TACSTD2/TROP2 concentration was determined to be 128.1 ng/mL in MCF-7 cell extract based on a 1.3 mg/mL extract load.



A431 were cultured in DMEM supplemented with 10% fetal bovine serum, 2.5 mM L-glutamine, 100 U/mL penicillin, and 100 µg/mL streptomycin sulfate. An aliquot of the cell culture supernate was removed, assayed for human TACSTD2/TROP2, and measured 3,934.4 pg/mL



Serum of eight individual healthy human donors was measured. The TACSTD2/TROP2 concentration of detected samples was determined to be 284.7 pg/mL with a range of 161.1-378.4 pg/mL