

For Research Use Only

# Mouse CD146/MCAM Recombinant antibody, PBS Only

Catalog Number: 86159-3-PBS



## Basic Information

<b>Catalog Number:</b> 86159-3-PBS	<b>GenBank Accession Number:</b> NM_023061.2	<b>Purification Method:</b> Protein A purification
<b>Size:</b> 100ug, Concentration: 1 mg/ml by Nanodrop;	<b>GeneID (NCBI):</b> 84004	<b>CloneNo.:</b> 250806F12
<b>Source:</b> Rabbit	<b>UNIPROT ID:</b> Q8R2Y2-1	
<b>Isotype:</b> IgG	<b>Full Name:</b> melanoma cell adhesion molecule	
<b>Immunogen Catalog Number:</b> EG2667	<b>Calculated MW:</b> 72 kDa	
	<b>Observed MW:</b> 120-140 kDa	

## Applications

**Tested Applications:**  
WB, IF/ICC, Indirect ELISA

**Species Specificity:**  
mouse

## Background Information

CD146, also known as melanoma cell adhesion molecule (MCAM) or MUC18, originally identified as a biomarker of melanoma progression, is a transmembrane glycoprotein of 113-130 kDa, belonging to the immunoglobulin (Ig) superfamily (PMID: 8378324; 25993332). Structurally, it consists of five Ig domains, a transmembrane domain, and a cytoplasmic region. In normal adult tissue, CD146 is primarily expressed by vascular endothelium and smooth muscle. CD146 is a key cell adhesion protein in vascular endothelial cell activity and angiogenesis, and has been used as marker of circulating endothelium cells (CECs) (PMID: 19356677). In addition to the membrane-anchored form of CD146, a soluble form of CD146 (sCD146, 105 kDa) has also been found in human plasma and in the supernatant of cultured human endothelial cells (PMID: 9462829; 19229070; 16374253; 14597988).

## Storage

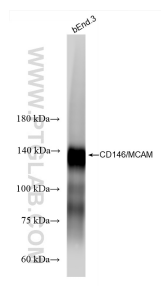
**Storage:**  
Store at -80°C.

**Storage Buffer:**  
PBS only, pH7.3

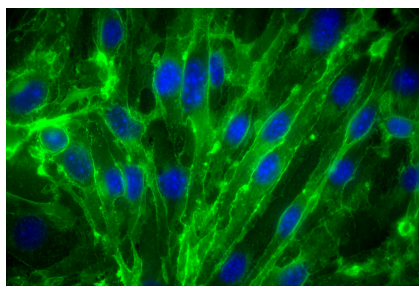
For technical support and original validation data for this product please contact:  
T: 1 (888) 4PTGLAB (1-888-478-4522) (toll free in USA), or 1(312) 455-8498 (outside USA)  
E: [proteintech@ptglab.com](mailto:proteintech@ptglab.com)  
W: [ptglab.com](http://ptglab.com)

This product is exclusively available under Proteintech Group brand and is not available to purchase from any other manufacturer.

## Selected Validation Data



bEnd.3 cells were subjected to SDS PAGE followed by western blot with 86159-3-RR (Mcam antibody) at dilution of 1:10000 incubated at room temperature for 1.5 hours. This data was developed using the same antibody clone with 86159-3-PBS in a different storage buffer formulation.



Immunofluorescent analysis of (4% PFA) fixed bEnd.3 cells using CD146/MCAM antibody (86159-3-RR, Clone: 250806F12 ) at dilution of 1:500 and CoraLite®488-Conjugated Goat Anti-Rabbit IgG(H+L) (SA00013-2). This data was developed using the same antibody clone with 86159-3-PBS in a different storage buffer formulation.