

For Research Use Only

CD146/MCAM Recombinant antibody

Catalog Number: 86159-3-RR



Basic Information

Catalog Number: 86159-3-RR	GenBank Accession Number: NM_023061.2	Purification Method: Protein A purification
Size: 100ul , Concentration: 1000 µg/ml by Nanodrop;	GeneID (NCBI): 84004	CloneNo.: 250806F12
Source: Rabbit	UNIPROT ID: Q8R2Y2-1	Recommended Dilutions: WB: 1:5000-1:50000 IF/ICC: 1:250-1:1000
Isotype: IgG	Full Name: melanoma cell adhesion molecule	
Immunogen Catalog Number: EG2667	Calculated MW: 72 kDa	
	Observed MW: 120-140 kDa	

Applications

Tested Applications: WB, IF/ICC, ELISA	Positive Controls:
Species Specificity: mouse	WB : bEnd.3 cells, mouse liver tissue IF/ICC : bEnd.3 cells,

Background Information

CD146, also known as melanoma cell adhesion molecule (MCAM) or MUC18, originally identified as a biomarker of melanoma progression, is a transmembrane glycoprotein of 113-130 kDa, belonging to the immunoglobulin (Ig) superfamily (PMID: 8378324; 25993332). Structurally, it consists of five Ig domains, a transmembrane domain, and a cytoplasmic region. In normal adult tissue, CD146 is primarily expressed by vascular endothelium and smooth muscle. CD146 is a key cell adhesion protein in vascular endothelial cell activity and angiogenesis, and has been used as marker of circulating endothelium cells (CECs) (PMID: 19356677). In addition to the membrane-anchored form of CD146, a soluble form of CD146 (sCD146, 105 kDa) has also been found in human plasma and in the supernatant of cultured human endothelial cells (PMID: 9462829; 19229070; 16374253; 14597988).

Storage

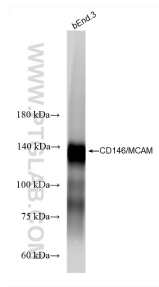
Storage:
Store at -20°C. Stable for one year after shipment.
Storage Buffer:
PBS with 0.02% sodium azide and 50% glycerol, pH7.3
Aliquoting is unnecessary for -20°C storage

*** 20ul sizes contain 0.1% BSA

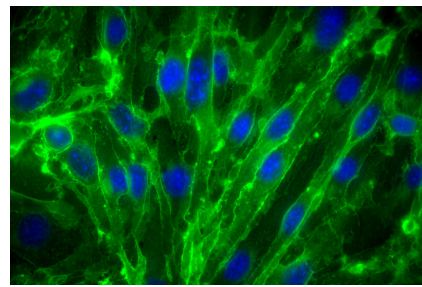
For technical support and original validation data for this product please contact:
T: 1 (888) 4PTGLAB (1-888-478-4522) (toll free in USA), or 1(312) 455-8498 (outside USA)
E: proteintech@ptglab.com
W: ptglab.com

This product is exclusively available under Proteintech Group brand and is not available to purchase from any other manufacturer.

Selected Validation Data



bEnd.3 cells were subjected to SDS PAGE followed by western blot with 86159-3-RR (Mcam antibody) at dilution of 1:10000 incubated at room temperature for 1.5 hours.



Immunofluorescent analysis of (4% PFA) fixed bEnd.3 cells using CD146/MCAM antibody (86159-3-RR, Clone: 250806F12) at dilution of 1:500 and CoraLite® 488-Conjugated Goat Anti-Rabbit IgG(H+L) (SA00013-2).