

For Research Use Only

# RTN2 Recombinant antibody, PBS Only (Capture)

Catalog Number: 86162-1-PBS



## Basic Information

<b>Catalog Number:</b> 86162-1-PBS	<b>GenBank Accession Number:</b> BC014244	<b>Purification Method:</b> Protein A purification
<b>Size:</b> 100ug , Concentration: 1 mg/ml by Nanodrop;	<b>GeneID (NCBI):</b> 6253	<b>CloneNo.:</b> 250823C1
<b>Source:</b> Rabbit	<b>UNIPROT ID:</b> O75298	
<b>Isotype:</b> IgG	<b>Full Name:</b> reticulon 2	
<b>Immunogen Catalog Number:</b> AG1655	<b>Calculated MW:</b> 59 kDa, 51 kDa, 22 kDa	
	<b>Observed MW:</b> 20-23 kDa	

## Applications

**Tested Applications:**  
WB, Indirect ELISA

**Species Specificity:**  
human, mouse, rat

## Product Information

86162-1-PBS targets RTN2 as part of a matched antibody pair:

MP02385-1: 86162-1-PBS capture and 86162-2-PBS detection (validated in Cytometric bead array)

Unconjugated rabbit recombinant monoclonal antibody in PBS only (BSA and azide free) storage buffer at a concentration of 1 mg/mL, ready for conjugation. Created using Proteintech's proprietary in-house recombinant technology. Recombinant production enables unrivalled batch-to-batch consistency, easy scale-up, and future security of supply.

This conjugation ready format makes antibodies ideal for use in many applications including: ELISAs, multiplex assays requiring matched pairs, mass cytometry, and multiplex imaging applications. Antibody use should be optimized by the end user for each application and assay.

## Background Information

Reticulon (RTN) proteins are a group of membrane-bound proteins that largely reside in endoplasmic reticulum (ER) (PMID: 18177508). Reticulon proteins share a common sequence feature, the reticulon homology domain (RHD). They are involved in shaping the tubular endoplasmic reticulum network, membrane trafficking, inhibition of axonal growth, and apoptosis (PMID: 24218324). Four mammalian reticulons (RTN1-4) exist. Human RTN2 gene produces three isoforms termed RTN2-A, RTN2-B, and RTN2-C. Isoform RTN2-C has a calculated molecular weight of 22 kDa and is highly expressed in skeletal muscle.

## Storage

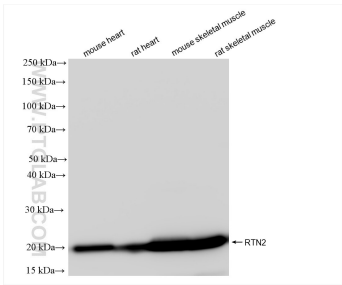
**Storage:**  
Store at -80°C.

**Storage Buffer:**  
PBS only, pH7.3

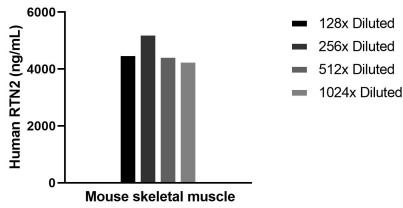
For technical support and original validation data for this product please contact:  
T: 1 (888) 4PTGLAB (1-888-478-4522) (toll free in USA), or 1(312) 455-8498 (outside USA)  
E: [proteintech@ptglab.com](mailto:proteintech@ptglab.com)  
W: [ptglab.com](http://ptglab.com)

This product is exclusively available under Proteintech Group brand and is not available to purchase from any other manufacturer.

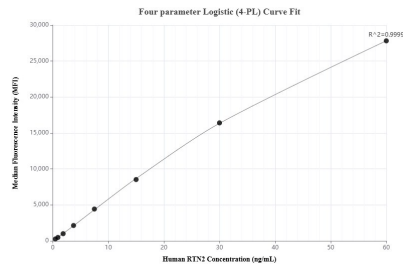
Selected Validation Data



Various lysates were subjected to SDS PAGE followed by western blot with 86162-1-RR (RTN2 antibody) at dilution of 1:10000 incubated at room temperature for 1.5 hours. This data was developed using the same antibody clone with 86162-1-PBS in a different storage buffer formulation.



The mean RTN2 concentration was determined to be 4623.0 ng/mL in Mouse skeletal muscle tissue extract based on a 4.1 mg/mL extract load.



Cytometric bead array standard curve of MP02385-1, RTN2 Recombinant Matched Antibody Pair, PBS Only. Capture antibody: 86162-1-PBS. Detection antibody: 86162-2-PBS. Standard: Ag1655. Range: 0.469-60 ng/mL.