

For Research Use Only

SLC25A22 Recombinant antibody

Catalog Number: 86163-1-RR



Basic Information

Catalog Number: 86163-1-RR	GenBank Accession Number: BC023545	Purification Method: Protein A purification
Size: 100ul , Concentration: 1000 µg/ml by Nanodrop;	GeneID (NCBI): 79751	CloneNo.: 250788B11
Source: Rabbit	UNIPROT ID: Q9H936	Recommended Dilutions: WB: 1:5000-1:50000
Isotype: IgG	Full Name: solute carrier family 25 (mitochondrial carrier: glutamate), member 22	
Immunogen Catalog Number: AG19958	Calculated MW: 323 aa, 34 kDa	
	Observed MW: 30-34 kDa	

Applications

Tested Applications: WB, ELISA	Positive Controls: WB : HeLa cells, HepG2 cells, HT-29 cells
Species Specificity: human	

Background Information

SLC25A22 encodes a mitochondrial glutamate/H⁺ symporter with highly expression in brain, especially in astrocytes, where it controls glutamate uptake. The mutations of SLC25A22 are associated with the early/infantile epileptic encephalopathies. It has been shown that SLC25A22 plays a key role in promoting proliferation and migration in cancer, such as human colorectal cancer (CRC) and Gallbladder cancer (GBC). And there is a result that the expression of SLC25A22 in GBC was significantly higher than that in adjacent tissues. 25402-1-AP antibody is specific to SLC25A22.(PMID: 30814911, 25033742, 24596948)

Storage

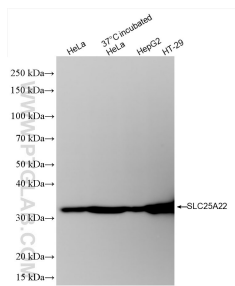
Storage:
Store at -20°C. Stable for one year after shipment.
Storage Buffer:
PBS with 0.02% sodium azide and 50% glycerol, pH7.3
Aliquoting is unnecessary for -20°C storage

*** 20ul sizes contain 0.1% BSA

For technical support and original validation data for this product please contact:
T: 1 (888) 4PTGLAB (1-888-478-4522) (toll free in USA), or 1(312) 455-8498 (outside USA)
E: proteintech@ptglab.com
W: ptglab.com

This product is exclusively available under Proteintech Group brand and is not available to purchase from any other manufacturer.

Selected Validation Data



Various lysates were subjected to SDS PAGE followed by western blot with 86163-1-RR (SLC25A22 antibody) at dilution of 1:10000 incubated at room temperature for 1.5 hours.