

For Research Use Only

REEP4 Recombinant antibody

Catalog Number: 86164-2-RR



Basic Information

Catalog Number:

86164-2-RR

Size:

100ul , Concentration: 1000 µg/ml by Nanodrop;

Source:

Rabbit

Isotype:

IgG

Immunogen Catalog Number:

AG24569

GenBank Accession Number:

BC013048

GeneID (NCBI):

80346

UNIPROT ID:

Q9H6H4

Full Name:

receptor accessory protein 4

Calculated MW:

29 kDa

Observed MW:

29 kDa

Purification Method:

Protein A purification

CloneNo.:

250770C3

Recommended Dilutions:

WB: 1:5000-1:50000

Applications

Tested Applications:

WB, ELISA

Species Specificity:

human, mouse, rat

Positive Controls:

WB : K-562 cells, mouse testis tissue, U-251 cells, BxPC-3 cells, HaCaT cells, rat testis tissue

Background Information

REEP4 (Receptor Expression-Enhancing Protein 4) is a member of the REEP family of proteins, a transmembrane protein that interacts with odorant receptor proteins and may enhance the odorant receptor responses to odorants. It is localized to the endoplasmic reticulum (ER) and is associated with the nuclear envelope (NE). REEP4 helps link the high-curvature ER to the ELYS-based nuclear pore complex (NPC) seed, thereby promoting NPC biogenesis during late mitosis. REEP4 expression is associated with the cell cycle, osteoclast differentiation, Fc gamma R-mediated phagocytosis, and Human T-cell leukemia virus 1 infection. (PMID: 36191880; 38947393)

Storage

Storage:

Store at -20°C. Stable for one year after shipment.

Storage Buffer:

PBS with 0.02% sodium azide and 50% glycerol, pH7.3

Aliquoting is unnecessary for -20°C storage

*** 20ul sizes contain 0.1% BSA

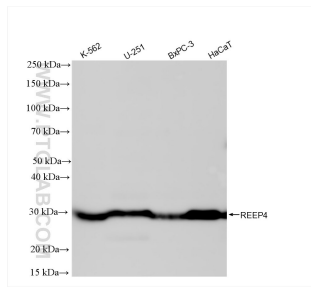
For technical support and original validation data for this product please contact:

T: 1 (888) 4PTGLAB (1-888-478-4522) (toll free in USA), or 1(312) 455-8498 (outside USA)

E: proteintech@ptglab.com
W: ptglab.com

This product is exclusively available under Proteintech Group brand and is not available to purchase from any other manufacturer.

Selected Validation Data



Various lysates were subjected to SDS PAGE followed by western blot with 86164-2-RR (REEP4 antibody) at dilution of 1:10000 incubated at room temperature for 1.5 hours.