

For Research Use Only

PLEKHH2 Recombinant antibody, PBS Only

Catalog Number: 86166-3-PBS



Basic Information

Catalog Number: 86166-3-PBS	GenBank Accession Number: BC063310	Purification Method: Protein A purification
Size: 100ug , Concentration: 1 mg/ml by Nanodrop;	GeneID (NCBI): 130271	CloneNo.: 250291H8
Source: Rabbit	UNIPROT ID: Q8IVE3	
Isotype: IgG	Full Name: pleckstrin homology domain containing, family H (with MyTH4 domain) member 2	
Immunogen Catalog Number: AG5409	Calculated MW: 168 kDa	
	Observed MW: 168 kDa	

Applications

Tested Applications:
WB, Indirect ELISA

Species Specificity:
human

Background Information

PLEKHH2 is a 1491-residue intracellular protein highly enriched in renal glomerular podocytes. PLEKHH2 is one of two previously uncharacterized PLEKHH proteins encoded in the mammalian genomes. A PLEKHH ortholog has also been described in *Drosophila*, *Caenorhabditis elegans*, and zebrafish. In *C. elegans*, the loss of the protein was found to cause variable axon guidance defects.

Storage

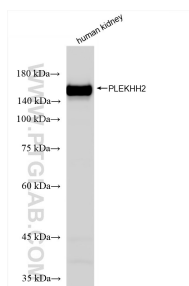
Storage:
Store at -80°C.

Storage Buffer:
PBS only, pH7.3

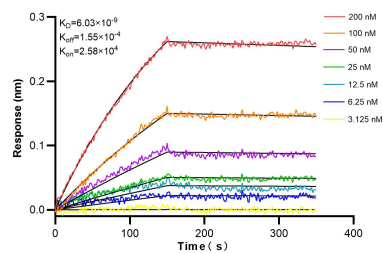
For technical support and original validation data for this product please contact:
T: 1 (888) 4PTGLAB (1-888-478-4522) (toll free in USA), or 1(312) 455-8498 (outside USA)
E: proteintech@ptglab.com
W: ptglab.com

This product is exclusively available under Proteintech Group brand and is not available to purchase from any other manufacturer.

Selected Validation Data



human kidney tissue were subjected to SDS PAGE followed by western blot with 86166-3-RR (PLEKHH2 antibody) at dilution of 1:2000 incubated at room temperature for 1.5 hours. This data was developed using the same antibody clone with 86166-3-PBS in a different storage buffer formulation.



Biolayer interferometry (BLI) kinetic assays of 86166-3-RR against Human PLEKHH2 were performed. The affinity constant is 6.03 nM.