

For Research Use Only

# PLEKHH2 Recombinant antibody

Catalog Number: 86166-3-RR



## Basic Information

<b>Catalog Number:</b> 86166-3-RR	<b>GenBank Accession Number:</b> BC063310	<b>Purification Method:</b> Protein A purification
<b>Size:</b> 100ul , Concentration: 1000 µg/ml by Nanodrop;	<b>GeneID (NCBI):</b> 130271	<b>CloneNo.:</b> 250291H8
<b>Source:</b> Rabbit	<b>UNIPROT ID:</b> Q8IVE3	<b>Recommended Dilutions:</b> WB: 1:1000-1:4000
<b>Isotype:</b> IgG	<b>Full Name:</b> pleckstrin homology domain containing, family H (with MyTH4 domain) member 2	
<b>Immunogen Catalog Number:</b> AG5409	<b>Calculated MW:</b> 168 kDa	
	<b>Observed MW:</b> 168 kDa	

## Applications

<b>Tested Applications:</b> WB, ELISA	<b>Positive Controls:</b> WB : human kidney tissue,
<b>Species Specificity:</b> human	

## Background Information

PLEKHH2 is a 1491-residue intracellular protein highly enriched in renal glomerular podocytes. PLEKHH2 is one of two previously uncharacterized PLEKHH proteins encoded in the mammalian genomes. A PLEKHH ortholog has also been described in *Drosophila*, *Caenorhabditis elegans*, and zebrafish. In *C. elegans*, the loss of the protein was found to cause variable axon guidance defects.

## Storage

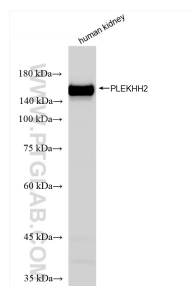
**Storage:**  
Store at -20°C. Stable for one year after shipment.  
**Storage Buffer:**  
PBS with 0.02% sodium azide and 50% glycerol, pH7.3  
**Aliquoting is unnecessary for -20°C storage**

\*\*\* 20ul sizes contain 0.1% BSA

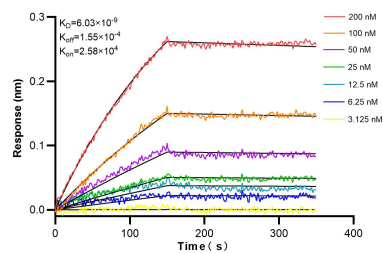
For technical support and original validation data for this product please contact:  
T: 1 (888) 4PTGLAB (1-888-478-4522) (toll free in USA), or 1(312) 455-8498 (outside USA)  
E: [proteintech@ptglab.com](mailto:proteintech@ptglab.com)  
W: [ptglab.com](http://ptglab.com)

This product is exclusively available under Proteintech Group brand and is not available to purchase from any other manufacturer.

## Selected Validation Data



human kidney tissue were subjected to SDS PAGE followed by western blot with 86166-3-RR (PLEKHH2 antibody) at dilution of 1:2000 incubated at room temperature for 1.5 hours.



Biolayer interferometry (BLI) kinetic assays of 86166-3-RR against Human PLEKHH2 were performed. The affinity constant is 6.03 nM.