

For Research Use Only

# CSNK2A2 Recombinant antibody

Catalog Number: 86169-2-RR



## Basic Information

Catalog Number:

86169-2-RR

Size:

100ul

Source:

Rabbit

Isotype:

IgG

Immunogen Catalog Number:

AG0877

GenBank Accession Number:

BC008812

GeneID (NCBI):

1459

UNIPROT ID:

P19784

Full Name:

casein kinase 2, alpha prime

polypeptide

Calculated MW:

41 kDa

Observed MW:

35-40 kDa

Purification Method:

Protein A purification

CloneNo.:

250812B3

Recommended Dilutions:

WB: 1:5000-1:50000

IF/ICC: 1:50-1:500

## Applications

Tested Applications:

WB, IF/ICC, ELISA

Species Specificity:

human, mouse, rat

Positive Controls:

WB : HeLa cells, HepG2 cells, HEK-293 cells, A-673 cells, Jurkat cells, NIH/3T3 cells, PC-12 cells

IF/ICC : HeLa cells,

## Background Information

CSNK2A2(Casein kinase II subunit alpha') is also named as CK2A3, CK2A2, CSNK2A1, CK2 and belongs to the protein kinase superfamily. It can function as a component of the p53/TP53-dependent spindle assembly checkpoint (SAC) that maintains cyclin-B-CDK1 activity and G2 arrest in response to spindle damage during mitosis. It also can protect against ionizing radiation-induced apoptosis partly by phosphorylating and activating SIRT1.

## Storage

Storage:

Store at -20°C. Stable for one year after shipment.

Storage Buffer:

PBS with 0.02% sodium azide and 50% glycerol, pH7.3

Aliquoting is unnecessary for -20°C storage

\*\*\* 20ul sizes contain 0.1% BSA

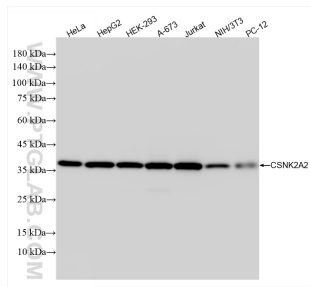
For technical support and original validation data for this product please contact:

T: 1 (888) 4PTGLAB (1-888-478-4522) (toll free in USA), or 1(312) 455-8498 (outside USA)

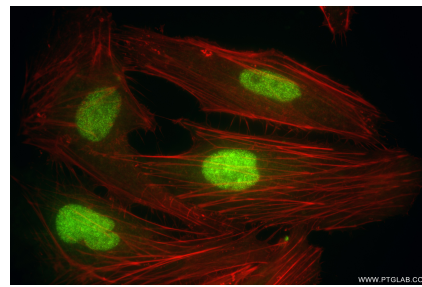
E: [proteintech@ptglab.com](mailto:proteintech@ptglab.com)  
W: [ptglab.com](http://ptglab.com)

This product is exclusively available under Proteintech Group brand and is not available to purchase from any other manufacturer.

## Selected Validation Data



Various lysates were subjected to SDS PAGE followed by western blot with 86169-2-RR (CSNK2A2 antibody) at dilution of 1:10000 incubated at room temperature for 1.5 hours.



Immunofluorescent analysis of (4% PFA) fixed HeLa cells using CSNK2A2 antibody (86169-2-RR, Clone: 250812B3 ) at dilution of 1:200 and CoraLite® 488-Conjugated Goat Anti-Rabbit IgG(H+L) (SA00013-2), CL594-Phalloidin (red).