

For Research Use Only

SF3A1 Recombinant antibody

Catalog Number: 86170-2-RR



Basic Information

Catalog Number: 86170-2-RR	GenBank Accession Number: BC007684	Purification Method: Protein A purification
Size: 100ul , Concentration: 1000 µg/ml by Nanodrop;	GeneID (NCBI): 10291	CloneNo.: 250768F4
Source: Rabbit	UNIPROT ID: Q15459	Recommended Dilutions: WB: 1:2000-1:10000 IF/ICC: 1:250-1:1000
Isotype: IgG	Full Name: splicing factor 3a, subunit 1, 120kDa	
Immunogen Catalog Number: AG8196	Calculated MW: 793 aa, 89 kDa	
	Observed MW: 120 kDa	

Applications

Tested Applications: WB, ELISA	Positive Controls:
Species Specificity: human, rat	WB : HeLa cells, rat kidney tissue, HEK-293 cells, K-562 cells, HL-60 cells, LNCaP cells, Neuro-2a cells
	IF/ICC : HeLa cells,

Background Information

SF3A1, also known as SF3a120, is a 793 amino acid protein, which is a Subunit of the splicing factor SF3A required for 'A' complex assembly formed by the stable binding of U2 snRNP to the branchpoint sequence (BPS) in pre-mRNA. SF3A1 also be involved in the assembly of the 'E' complex. The calculated molecular weight of SF3A1 is 88 kDa, but the modified SF3A1 is about 115-120 kDa.(PMID: 7489498)

Storage

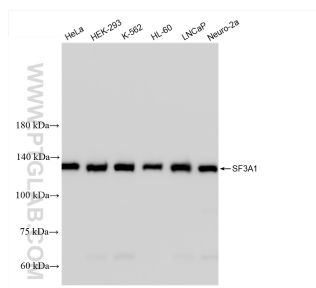
Storage:
Store at -20°C. Stable for one year after shipment.
Storage Buffer:
PBS with 0.02% sodium azide and 50% glycerol, pH7.3
Aliquoting is unnecessary for -20°C storage

*** 20ul sizes contain 0.1% BSA

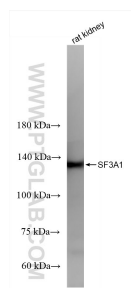
For technical support and original validation data for this product please contact:
T: 1 (888) 4PTGLAB (1-888-478-4522) (toll free in USA), or 1(312) 455-8498 (outside USA)
E: proteintech@ptglab.com
W: ptglab.com

This product is exclusively available under Proteintech Group brand and is not available to purchase from any other manufacturer.

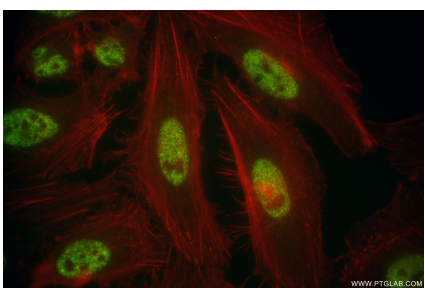
Selected Validation Data



Various lysates were subjected to SDS PAGE followed by western blot with 86170-2-RR (SF3A1 antibody) at dilution of 1:5000 incubated at room temperature for 1.5 hours.



rat kidney tissue were subjected to SDS PAGE followed by western blot with 86170-2-RR (SF3A1 antibody) at dilution of 1:5000 incubated at room temperature for 1.5 hours.



Immunofluorescent analysis of (4% PFA) fixed HeLa cells using SF3A1 antibody (86170-2-RR, Clone: 250768F4) at dilution of 1:500 and CoraLite®488-Conjugated Goat Anti-Rabbit IgG(H+L) (SA00013-2), CL594-Phalloidin (red).