

For Research Use Only

GPSM2 Recombinant antibody

Catalog Number: 86175-1-RR



Basic Information

| | | |
|--|--|---|
| Catalog Number: 86175-1-RR | GenBank Accession Number: BC027732 | Purification Method: Protein A purification |
| Size: 100ul , Concentration: 1000 µg/ml by Nanodrop; | GeneID (NCBI): 29899 | CloneNo.: 250793G2 |
| Source: Rabbit | UNIPROT ID: P81274 | Recommended Dilutions: WB: 1:2000-1:10000 |
| Isotype: IgG | Full Name: G-protein signaling modulator 2 (AGS3-like, C. elegans) | |
| Immunogen Catalog Number: AG25195 | Calculated MW: 75 kDa | |
| | Observed MW: 70-77 kDa | |

Applications

| | |
|--|--|
| Tested Applications: WB, ELISA | Positive Controls: WB : HeLa cells, HepG2 cells, HEK-293 cells, mouse liver tissue, rat liver tissue |
| Species Specificity: human | |

Background Information

GPSM2 belongs to a family of proteins that modulate activation of G proteins. GPSM2 assists in the exchange of guanine nucleotides, and allows extracellular signals to be transmitted to cells via cell surface, and ultimately plays a key role in the activation of G-proteins. Therefore, GPSM2 is a critical factor for the stability of cell division. Some recent studies have shown that GPSM2 messenger RNA (mRNA) is overexpressed and plays a positive role in the development of certain tumors, such as liver cancer, pancreatic cancer, breast cancer. It also plays a role in neuroblast division and in the development of normal hearing. Mutations in GPSM2 are associated with autosomal recessive nonsyndromic deafness (DFNB82), which is a form of non-syndromic deafness characterized by prelingual, bilateral, severe, sensorineural hearing loss.

Storage

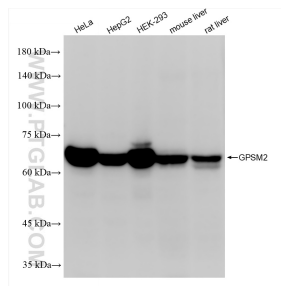
Storage:
Store at -20°C. Stable for one year after shipment.
Storage Buffer:
PBS with 0.02% sodium azide and 50% glycerol, pH7.3
Aliquoting is unnecessary for -20°C storage

*** 20ul sizes contain 0.1% BSA

For technical support and original validation data for this product please contact:
T: 1 (888) 4PTGLAB (1-888-478-4522) (toll free in USA), or 1(312) 455-8498 (outside USA)
E: proteintech@ptglab.com
W: ptglab.com

This product is exclusively available under Proteintech Group brand and is not available to purchase from any other manufacturer.

Selected Validation Data



Various lysates were subjected to SDS PAGE followed by western blot with 86175-1-RR (GP5M2 antibody) at dilution of 1:5000 incubated at room temperature for 1.5 hours.