

For Research Use Only

BCL2L13 Recombinant antibody

Catalog Number: 86183-1-RR



Basic Information

Catalog Number:	86183-1-RR	GenBank Accession Number:	BC003032	Purification Method:	Protein A purification
Size:	100ul , Concentration: 1000 µg/ml by Nanodrop;	GeneID (NCBI):	23786	CloneNo.:	250705F1
Source:	Rabbit	UNIPROT ID:	Q9BXK5	Recommended Dilutions:	WB: 1:1000-1:4000
Isotype:	IgG	Full Name:	BCL2-like 13 (apoptosis facilitator)		
Immunogen Catalog Number:	AG9841	Calculated MW:	485 aa, 53 kDa		
		Observed MW:	85 kDa		

Applications

Tested Applications:	WB, ELISA	Positive Controls:	WB : HeLa cells, K-562 cells, Raji cells, THP-1 cells
Species Specificity:	human		

Background Information

BCL2L13/MIL1 gene encodes a mitochondrially-localized protein with conserved B-cell lymphoma 2 homology motifs. BCL2L13 gene is highest expressed in heart, placenta and pancreas. The encoded protein Bcl-rambo may promote the activation of caspase-3 and apoptosis. The Bcl-rambo cell death activity was induced by its membrane-anchored C-terminal domain and not by the Bcl-2 homology region (PMID: 11262395). Multivariate analysis demonstrated that high expression of BCL2L13 was an independent prognostic factor for in childhood acute lymphoblastic leukemia (PMID: 20109966).

Storage

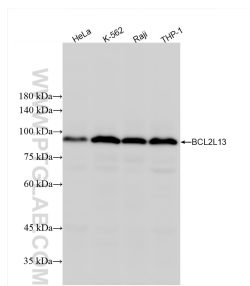
Storage:
Store at -20°C. Stable for one year after shipment.
Storage Buffer:
PBS with 0.02% sodium azide and 50% glycerol, pH7.3
Aliquoting is unnecessary for -20°C storage

*** 20ul sizes contain 0.1% BSA

For technical support and original validation data for this product please contact:
T: 1 (888) 4PTGLAB (1-888-478-4522) (toll free in USA), or 1(312) 455-8498 (outside USA)
E: proteintech@ptglab.com
W: ptglab.com

This product is exclusively available under Proteintech Group brand and is not available to purchase from any other manufacturer.

Selected Validation Data



Various lysates were subjected to SDS PAGE followed by western blot with 86183-1-RR (BCL2L13 antibody) at dilution of 1:2000 incubated at room temperature for 1.5 hours.