

For Research Use Only

MARVELD2 Recombinant antibody

Catalog Number: 86188-1-RR



Basic Information

Catalog Number: 86188-1-RR	GenBank Accession Number: BC033689	Purification Method: Protein A purification
Size: 100ul , Concentration: 1000 µg/ml by Nanodrop;	GeneID (NCBI): 153562	CloneNo.: 250774G9
Source: Rabbit	UNIPROT ID: Q8N4S9	Recommended Dilutions: WB: 1:1000-1:6000 IF/ICC: 1:250-1:1000
Isotype: IgG	Full Name: MARVEL domain containing 2	
Immunogen Catalog Number: AG4446	Calculated MW: 558 aa, 64 kDa	
	Observed MW: 60-64 kDa	

Applications

Tested Applications: WB, IF/ICC, ELISA	Positive Controls:
Species Specificity: human	WB : HeLa cells, MCF-7 cells IF/ICC : MCF-7 cells,

Background Information

MARVELD2, also named as Tricellulin or TRIC, is a 558 amino acid protein, which contains one MARVEL domain. MARVELD2 localizes the cell membrane and plays a role in the formation of the epithelial barriers. MARVELD2, is a first integral membrane protein that is concentrated at the vertically oriented tight junction strands of tricellular contacts. MARVELD2 may be a component to maintain the integrity for peripheral nervous system myelin function and morphology.

Storage

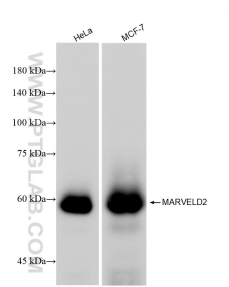
Storage:
Store at -20°C. Stable for one year after shipment.
Storage Buffer:
PBS with 0.02% sodium azide and 50% glycerol, pH7.3
Aliquoting is unnecessary for -20°C storage

*** 20ul sizes contain 0.1% BSA

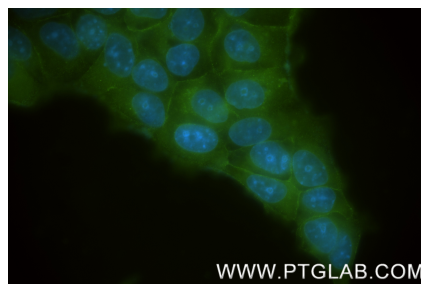
For technical support and original validation data for this product please contact:
T: 1 (888) 4PTGLAB (1-888-478-4522) (toll free in USA), or 1(312) 455-8498 (outside USA)
E: proteintech@ptglab.com
W: ptglab.com

This product is exclusively available under Proteintech Group brand and is not available to purchase from any other manufacturer.

Selected Validation Data



Various lysates were subjected to SDS PAGE followed by western blot with 86188-1-RR (MARVELD2 antibody) at dilution of 1:3000 incubated at room temperature for 1.5 hours.



Immunofluorescent analysis of (-20°C Methanol) fixed MCF-7 cells using MARVELD2 antibody (86188-1-RR, Clone: 250774G9) at dilution of 1:500 and CoraLite® 488-Conjugated Goat Anti-Rabbit IgG(H+L) (SA00013-2).