

For Research Use Only

Myogenin Recombinant antibody

Catalog Number: 86192-3-RR



Basic Information

Catalog Number: 86192-3-RR	GenBank Accession Number: BC053899	Purification Method: Protein A purification
Size: 100ul , Concentration: 1000 µg/ml by Nanodrop;	GeneID (NCBI): 4656	CloneNo.: 250187G11
Source: Rabbit	UNIPROT ID: P15173	Recommended Dilutions: WB: 1:5000-1:50000
Isotype: IgG	Full Name: myogenin (myogenic factor 4)	
Immunogen Catalog Number: AG25081	Calculated MW: 25 kDa	
	Observed MW: 25-30 kDa	

Applications

Tested Applications: WB, ELISA	Positive Controls:
Species Specificity: human, mouse, rat	WB : A-204 cells, C2C12 cells, mouse heart tissue, rat heart tissue, mouse skeletal muscle tissue, rat skeletal muscle tissue

Background Information

MYOG (encoded Myogenin protein) is a muscle-specific transcription factor that belongs to a family of basic helix-loop-helix transcription factors. It plays a role in muscle differentiation, cell cycle exit, and muscle atrophy(PMID: 30315160). Diseases associated with MYOG include Embryonal Rhabdomyosarcoma and Gallbladder Sarcoma.

Storage

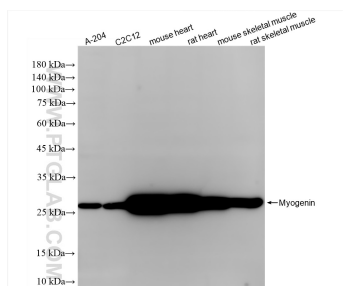
Storage:
Store at -20°C. Stable for one year after shipment.
Storage Buffer:
PBS with 0.02% sodium azide and 50% glycerol, pH7.3
Aliquoting is unnecessary for -20°C storage

*** 20ul sizes contain 0.1% BSA

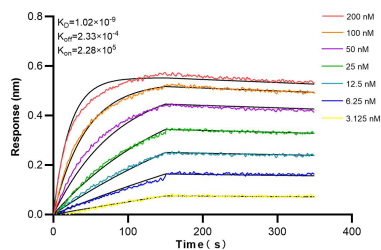
For technical support and original validation data for this product please contact:
T: 1 (888) 4PTGLAB (1-888-478-4522) (toll free in USA), or 1(312) 455-8498 (outside USA)
E: proteintech@ptglab.com
W: ptglab.com

This product is exclusively available under Proteintech Group brand and is not available to purchase from any other manufacturer.

Selected Validation Data



Various lysates were subjected to SDS PAGE followed by western blot with 86192-3-RR (Myogenin antibody) at dilution of 1:10000 incubated at room temperature for 1.5 hours.



Biolayer interferometry (BLI) kinetic assays of 86192-3-RR against Human Myogenin were performed. The affinity constant is 1.02 nM.